

Scientific center Bemkon

Konyukhov N.I.

**Cosmic energies and mankind:  
graphs for reflection**



16+

**Николай Игнатьевич Конюхов**  
**Cosmic energies and mankind:**  
**graphs for reflection**

*[http://www.litres.ru/pages/biblio\\_book/?art=37666168](http://www.litres.ru/pages/biblio_book/?art=37666168)  
SelfPub; 2018*

**Аннотация**

This book is about the facts of fundamental dependency between the mankind development and cosmic energies: both electromagnetic and non-electromagnetic ones. The facts are systematized in graphs. Their interpretation and conclusions are a prerogative of the readers. It's not a simple one. For those who are used to think independently.

## **Introduction**

For decades, research centers were systematically studying the human changes in the process of practical, as well as industrial, activity, considering the factors of cosmic activity. The results of these studies are presented in books, lectures, articles and presentations made by the leaders and employees of these scientific centers: <http://biruch.ru/>, <http://bemkon.ru/>, <http://www.sc-bemkon.com/>.

Most important, these results are embedded in systems of personnel selection and training both in commercial and some government structures. Their effectiveness is confirmed by practice.

The essence of the obtained scientific results is in a definite consequence: it is impossible to understand the development of mankind and Russia without considering the cosmic energy factor in a scientific analysis.

Reviewers:

V.V. Ostapov – full member of the International Academy of Information Processes and Technologies, Academy of Geopolitical Problems etc., Doctor of Military Sciences, Professor.

V.P. Sustavov – full member of the Academy of Military Sciences, Doctor of Philosophy, Professor.

V.V. Sysoev – Honored scientist of Russia, Doctor of Psychology, Professor.

## **Chapter 1. On psycho-cosmological studies and obtained scientific results**

A system crisis – economic, spiritual, socio-political, has stricken our world. The most prominent and deep thinking scientists, upon receiving the Nobel Prize, admit the impotence of the science in which they received world recognition.

Paul Krugman admits this regarding the field of economics.

URL: <http://slon.ru/articles/130856/>. (Paul Krugman. How did economists get it so wrong? / The New York Times/ URL: [http://www.nytimes.com/2009/09/06/magazine/06Economic-t.html?\\_r=1](http://www.nytimes.com/2009/09/06/magazine/06Economic-t.html?_r=1). 02.09.2009).

He admits to have a feeling that scientists do not analyze some important factors. Therefore, the understanding of what is happening is unsatisfactory, and even more so is the forecast of the future.

Cosmic energies are this hidden factor of society development that eludes from scientific analysis.

This conclusion and experimental and statistical evidence of such dependency were discovered in Russia. Russian cosmism has emerged.

This is due to the fact that Russian people are more dependent on cosmic energies than other nations. We intuitively feel them. Moreover, Russian physicists have a broader understanding of the essence of cosmic energies: they persistently prove, besides

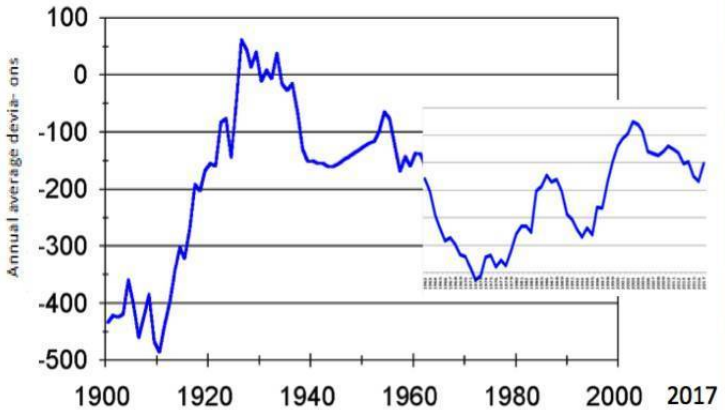
the presence of electromagnetic energies, the significance of other, non-electromagnetic energies. Some called them ether energy, some others – torsion fields, solitons etc. There are dozens of names of these non-electromagnetic vortex energies. Among supporters and opponents of every point of view, every scientific school, there has been and continues an acute scientific discussion and even struggle. As a result, Russian cosmism is developing.

It is difficult to measure cosmic energies. The research has shown that Length Of Day (LOD) is such an integral, real, fairly accurate and accessible to all indicator since 1962. It reflects the Earth's axial rotation velocity.

In order to bypass the discussions of physicists regarding the not fully studied structure and composition of cosmic energies, we have proposed the term – cosmic energies associated with the Earth's rotational velocity, to emphasize that these are not electromagnetic cosmic energies. In fact, this is a black box method.

Scientists measure the Earth's rotational velocity through the angular rotational velocity and the length of day (LOD).

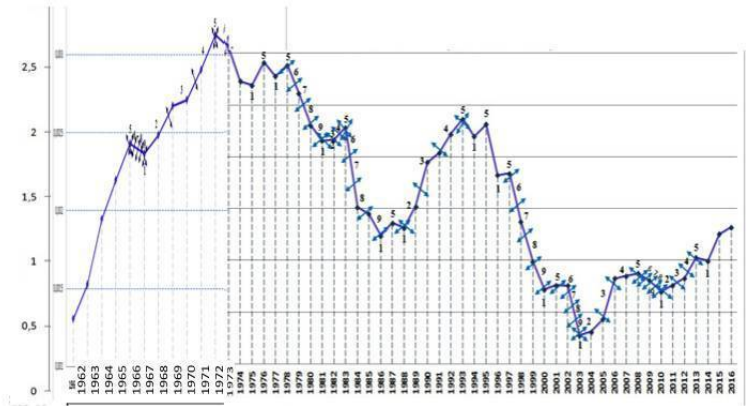
## Annual average deviation values of the average Earth's rotational velocity



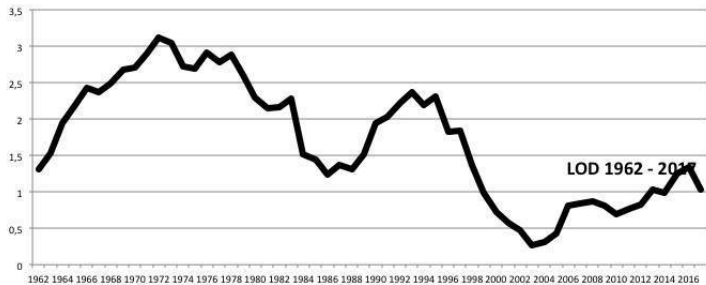
The figure shows the value change over time for the 1900 – 2000 period. The axis of ordinates in these figures is given in units (see V.D. Kokurov).

The graphs of the Earth's rotational velocity are mirror-like to the graphs of the length of day – LOD. LOD is measured highly accurately and placed at the websites of laboratories around the world.

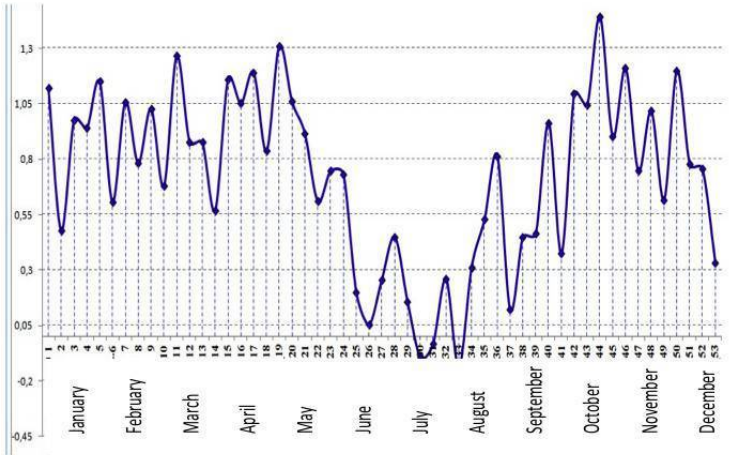
Earth LOD data since 1962 in ms  
average for the year



Earth LOD data since 1962 in ms  
average for the year

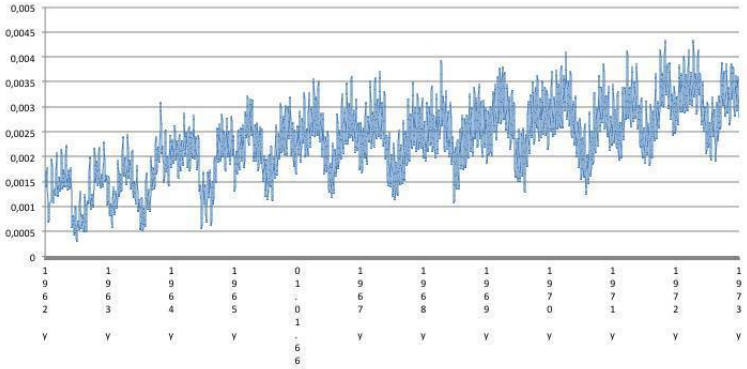


## Earth LOD data 2000 in ms average by week (example)



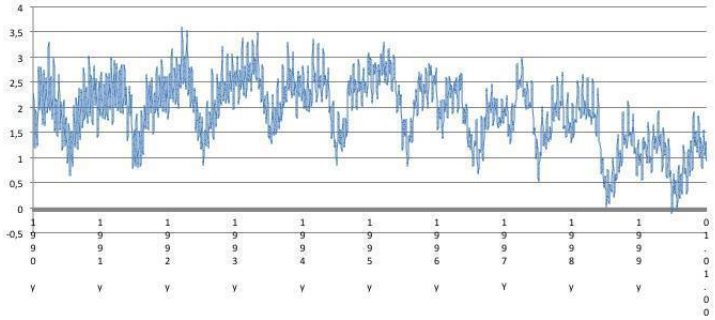
Average by day:

### LOD 1962 - 1972



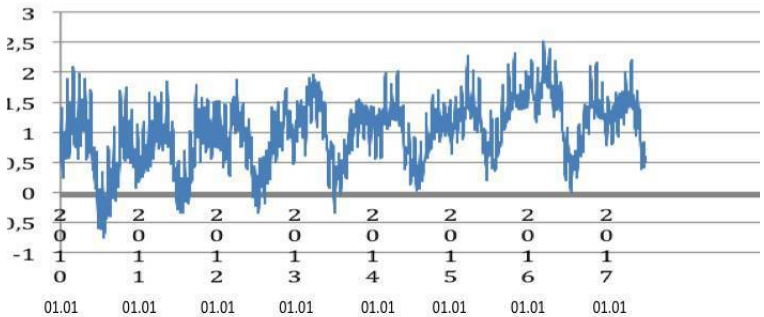
Since 1973, a new method for calculating LOD.

### LOD 1990 - 1999



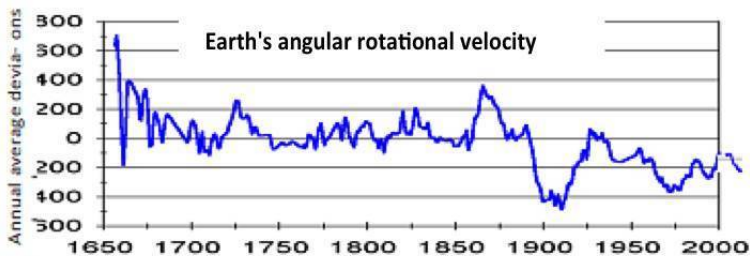
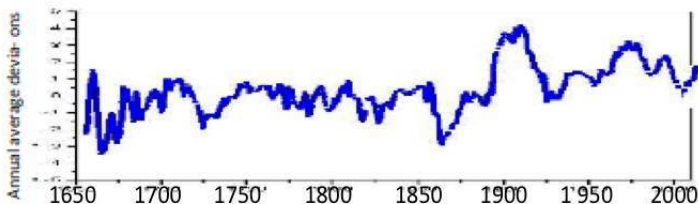


## LOD 2010 - 2017



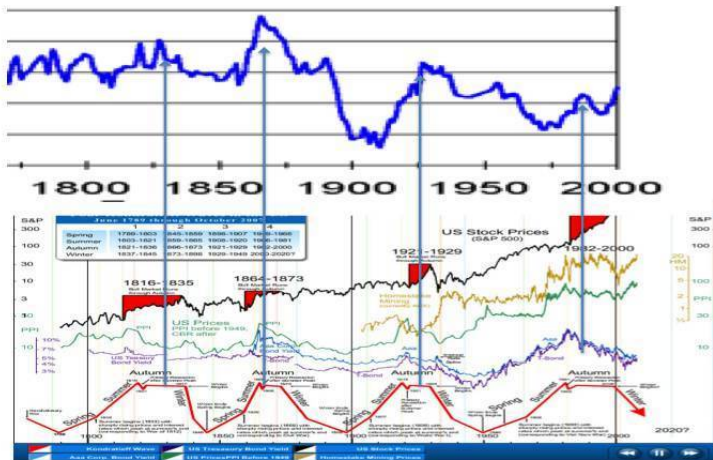
Consider that the length of day (LOD) graph is symmetrically opposite to the graph of the Earth's angular rotational velocity. According to LOD, slowdown of the Earth's rotational velocity is associated with the longer duration of the Earth's day.

### Earth's LOD (length of day)



The figure shows the value change over time for the 1650 – 2000 period. (see V.D. Kokurov).

# The Earth's angular rotational velocity and Kondratieff cycles

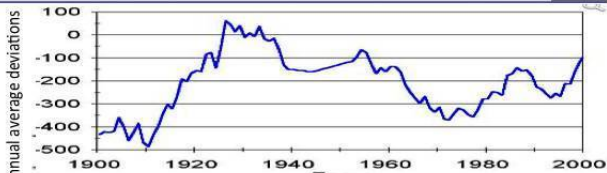
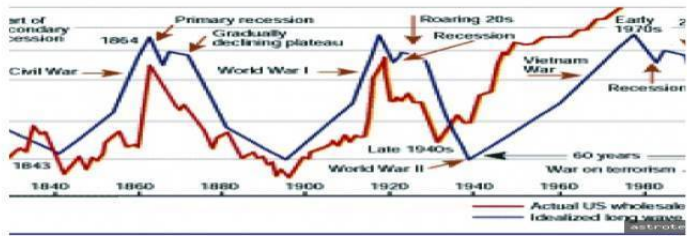


<http://dewinforex.com/images/kondr-cycles-4.jpg>

<http://dewinforex.com/images/kondr-cycles-4.jpg>

# The Earth's angular rotational velocity and Kondratieff cycles with the displacement in 30 years

## The Kondratieff Wave



[www.wikireading.ru/img/388787\\_13\\_i\\_016.jpg](http://www.wikireading.ru/img/388787_13_i_016.jpg)

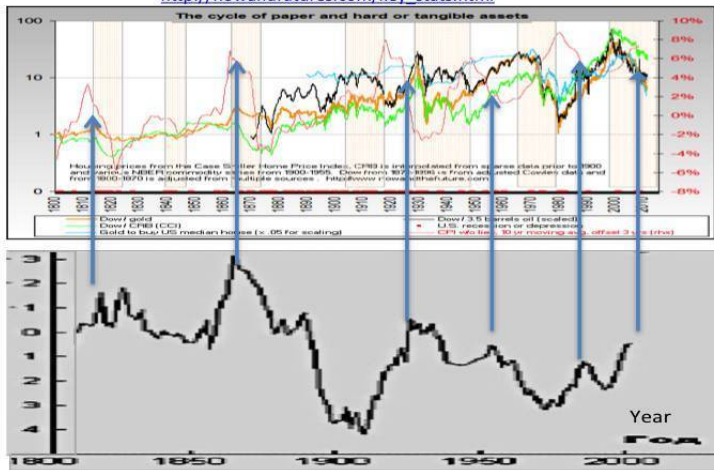
[www.wikireading.ru/img/388787\\_13\\_i\\_016.jpg](http://www.wikireading.ru/img/388787_13_i_016.jpg)

Let us combine them with the well-known graphs of economists.

All fundamental economic and socio-political processes are visually related to these graphs.

## Fundamental economic indicators of the USA development and the Earth's rotational velocity

[http://nowandfutures.com/key\\_stats.html](http://nowandfutures.com/key_stats.html)



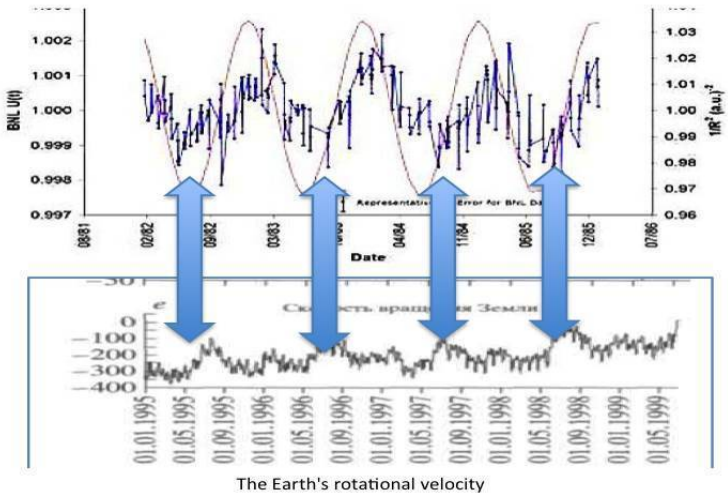
[http://nowandfutures.com/key\\_stats.html](http://nowandfutures.com/key_stats.html)

The system of such graphs has been obtained for different countries and for different economic and financial indicators. It leaves no doubt that the Earth's rotational velocity reflects powerful cosmic energies.

They affect economic processes on Earth, and are also related to the intensity of isotope decay. Scientists of the Brookhaven laboratory in the United States have discovered the annual periodicity of the decay process of silicon isotopes. It is correlated to the value, where is the distance between the Earth

and the Sun. At the same time, it is an indicator of the Earth's orbital movement velocity. In winter, at perihelion, it is maximal (the distance to the Sun is minimal), whereas in summer, in aphelion, it is minimal. With the change of the Earth's orbital movement velocity its axial rotational velocity also changes.

Comparative graph of the silicon isotope  $^{32}\text{Si}$  half-life and the Earth's rotational velocity

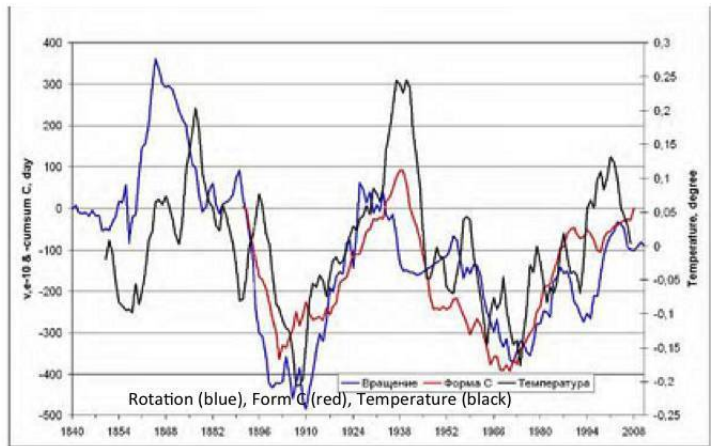


См.: JereH. Jenkins, EphraimFischbach, JohnB. Buncher, JohnT. Gruenwald, DennisE. KrauseandJoshuaJ. Mattes,

# «Evidence for Correlations Between Nuclear Decay Rates and Earth-Sun Distance» (arXiv:0808.3283v1 [astro-ph]).

These cosmic energies are so great that they affect the temperature changes on Earth.

## Temperature, humidity and the Earth's rotational velocity according to the Russian Hydrometeorological center data

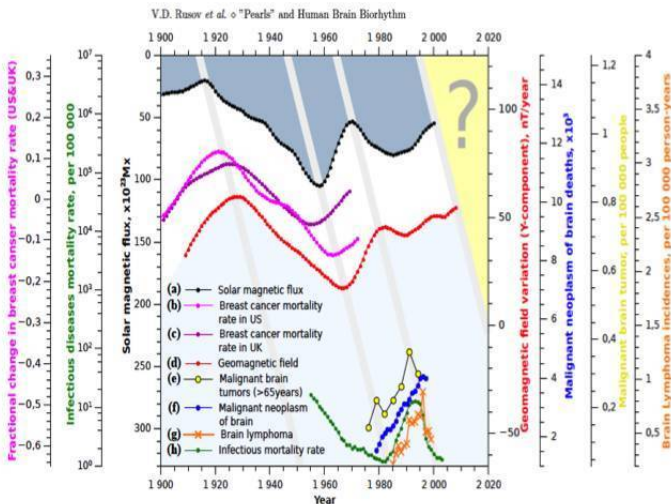


Synchronous changes of the Earth's rotational velocity ( $v \times 10^{10}$ ) in relative units (slid blue line), accumulated anomalies of the annual number of days with processes of the circulation form -C (red) and moving averages of the air temperature global anomalies for five years after the trend

exclusion according to the HadCRUT3data (black).

Ref.: N. S. Sidorenkov. "Impact of the annual and monthly Earth's rotation on cycling of the atmospheric processes, weather and climate changes", Hydro-meteorological Centre of Russia.

Solar activity is a concrete manifestation of cosmic energies. There are profound works in this field.



## Time evolution

(a) the variations of magnetic flux at the bottom (tachocline zone) of the Sun convective zone (see Dikpati, G. de Toma, and

P. A. Gilman, 2008);

(b) fractional change in female breast cancer mortality (see: Juckett David A., 2009);

(c) fractional change in female breast cancer mortality for birth cohort in UK (see: Juckett David A., 2009);

(d) geomagnetic field secular variations (Y-component, nT/year) as observed at the Eskdalemuir observatory (England) (see: [http://www.geomag.bgs.ac.uk./gifs/annual\\_means.shtml](http://www.geomag.bgs.ac.uk./gifs/annual_means.shtml)), where the variations (gY/gt) are directly proportional to the westward drift of magnetic features;

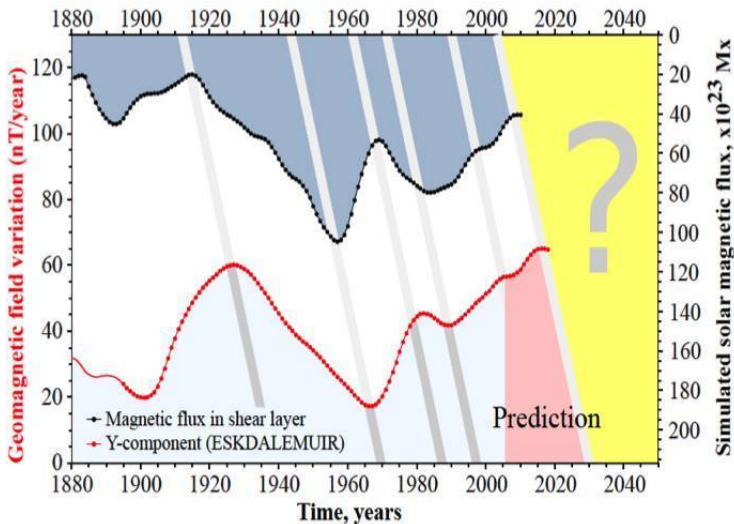
(e) Malignant brain tumor (brain stem) (see: Legler Julie M., 1999) ;

(f) the number of deaths from ICD9 item n 191 Malignant neoplasm of brain (see: Pechholdova M., 2008);

(g) Brain lymphoma incidences in US;

(h) the mortality rates from infectious diseases (incl. Tuberculosis) at ages 15 – 34 in France (see: Mesle F., 2006);

The curves (a) and (b) are smoothed by the sliding intervals of 5 and 11 years.



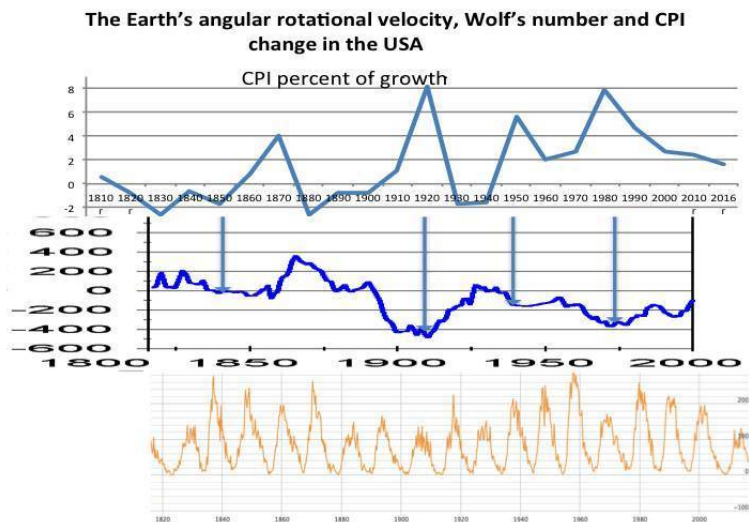
Time evolution of (a) the variations of the magnetic flux at the bottom (the tachocline zone) of the Sun convective zone (see: M. T. Santini, G. Rainaldi, and P. Indovina., 2009), (b) the geomagnetic field secular variations (the Y-component, nT / year) measured at the Eskdalemuir observatory (England), (see: A. R. Liboff, 2009 ). Curves are smoothed by the sliding intervals in 5 and 11 years.

Rusov V. and his colleagues also used the rotation speed of the Earth.

So, the change of economic indicators depending on the

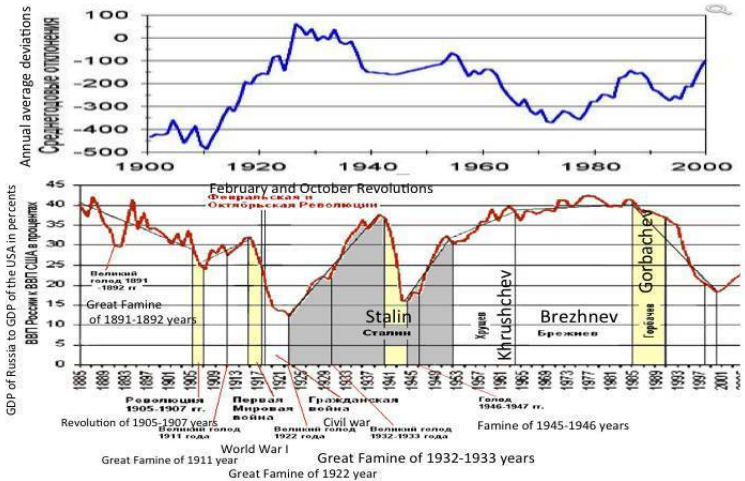
Earth's rotational velocity does not look unusual any more.

We present the data for a given time period on the Earth's rotational velocity, on the change of consumer basket cost, that is, the CPI index (percentage of the previous year value), and on solar activity. These data are available for a period from the beginning of the XIX century.



Such an integral indicator as the GDP growth rate also depends on the Earth's rotational velocity. This dependency is different in different countries.

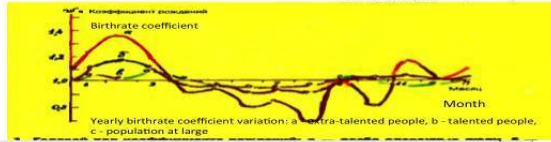
## Correlation of the Earth's rotational velocity change and the relation between GDP of the USSR and Russia to the USA



But the GDP growth is determined by the people's labor activity. Naturally, people changes are also dependent on the Earth's rotational velocity. In the annual cycle, slowdown of the Earth's rotation (corresponds to winter) is related to the growth of people's creativity potential. Famous, creative personalities were born in winter months more often (data by E. Vinogradov).

Average length of earthday (LOD) for the corresponding week in a year, birthrate of extra-talented people and monthly average IQ value for the subjects of the same type

Length of earthday (LOD) and birthrate of extra-talented people



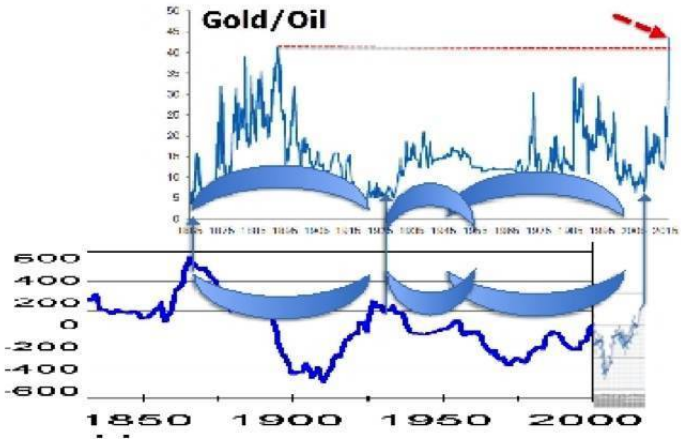
Whereas the formally logical IQ tests (intelligence coefficient) are better solved by people in summer, at the maximum Earth's rotational velocity.

The results of intellectual tests also depend on the subject's date of birth. That is, the cosmic energies associated with the Earth's rotational velocity affect personality at the moment of birth. These dependencies are also associated with the stock market movement.

## Annual cycles of the S&P 500 index change for and IQ of surveyed depending on the month of birth



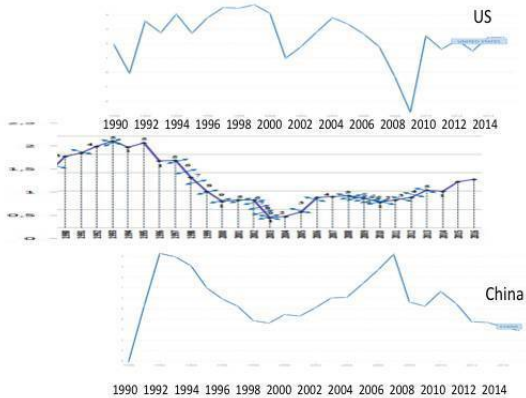
Gold/oil price ratio and the Earth's rotational velocity (LOD) in the XIX-XX centuries with a 7-year shift

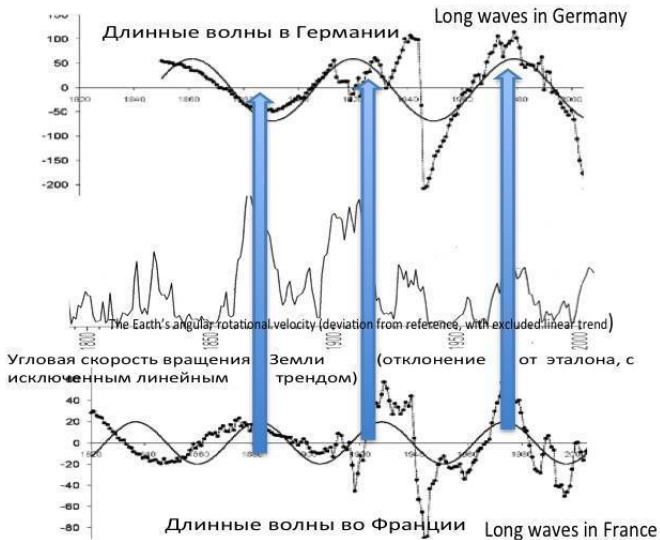


It was discovered that different countries respond to cosmic energies differently. In terms of GDP growth rates, all countries are divided into those whose GDP grows with the slowdown of the Earth's rotational velocity, and those whose GDP grows with the growth of the Earth's rotational velocity.

# Rates of GDP growth for China, the United States in 1990-2015 and the Earth's rotational velocity (LOD) with the displacement in 4 years

Темпы роста ВВП Китая, США в 1990 – 2015 годах и скорость вращения Земли (LOD) со сдвигом на 4 года





The graphs of long waves, cycles of economic development are taken from the book “Kondratiev waves: aspects and prospects”. Volgograd, 2012. – 384 p.

All countries are surprisingly divided into two relatively opposite groups in terms of agreement degree of the Earth's rotational velocity with the GDP growth rates.

**Correlation Factors of GDP Growth Rate and the Earth LOD from 1973 to 2015. GDP Growth Percentage in 2015**

	R LOD 1973 – 2015	2015: GDP growth percentage
Latin America & Caribbean	-0,29	-0,29
East Asia & Pacific	0,41	3,92
Euro area	0,29	2,04
<u>Germany</u>	0,23	1,72
Japan	0,473	0,47
Middle East & North Africa	0,086	3,09
India	-0,417	7,24
<u>Sweden</u>	-0,175	4,12
World	0,036	2,63
<u>Norway</u>	0,537	1,61
North America	0,14	2,44
<u>Finland</u>	0,21	0,21
China	-0,25	6,91
High income	0,239	2,08
Low income	0,663	4,4
Lower middle income	-0,363	5,3
South Africa	-0,13	1,26
South Asia	-0,427	7,1

Generally, in the world there is almost no relationship between the Earth's rotational velocity and the GDP growth rates.  $R LOD / \% World = 0.036$ .

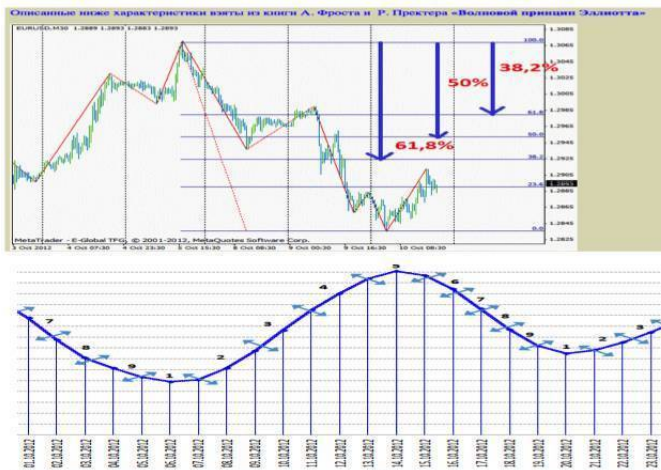
Countries are almost equally divided into those that have a positive relationship between the GDP growth rates and LOD, and those whose GDP is negatively correlated with its values.

Financial markets change with the Earth's rotational velocity not only on the annual and ten-year time scale, but also on the daily basis.

There is another classic example of market behavior

according to the Elliott wave theory. For a shorter and quieter period of time. This is classics: from the book on Elliott Waves.

**Elliot wave on the stock market and the Earth's rotational velocity, Graph from the book "Elliott wave principle" by A. Frost, R. Prekter**



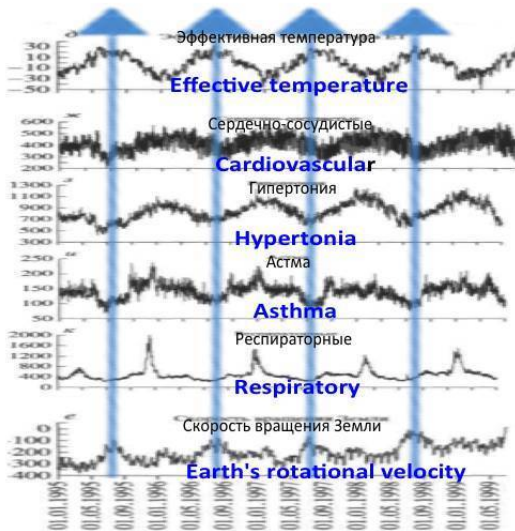
Elliot wave on the financial market and the Earth's rotational velocity. Graph is taken from "Wave principle of Elliot" of A. Frost and R. Prekter

The ratio of the cosmic energies associated with the Earth's rotational velocity and the solar activity makes clear some socio-political processes.

And even allows to predict protest actions. (see <http://bemkon.ru/Fragments/Article19.asp>)

Such an influence of cosmic energies on economic and social processes is related to the fact that people are different physiologically, at the level of their health, at the high and low Earth's rotational velocities.

**A relationship was found between the frequency of ambulance calls in Moscow and the Earth's rotational velocity**

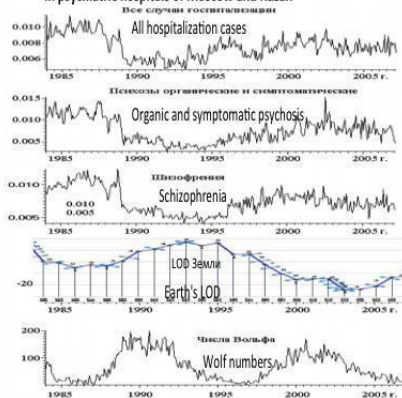


The frequency of ambulance calls is strikingly similar to the form of series of the Earth's rotational velocity; correlation coefficient (CC) is very high, statistically significant and equal to -0.46 with more than 1600 samples in each series and almost zero shift. This is almost absolute agreement for wave processes.

See: V.A. Chereshev, A.G. Gomburtsev, T.K. Breus. A man and his three surrounding environments. Vestnik of the Russian Academy of Sciences. 2007, vol. 77, №7, pp. 618-627.

This appears at monthly and annual scales, so these dependencies cannot be explained with seasonality of diseases.

## Comparative analysis of the number dynamics of emergency hospitalizations in psychiatric hospitals of Moscow and Kazan

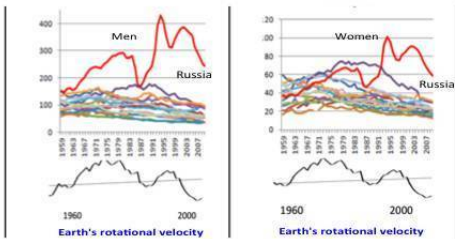


Combined series of numbers of hospitalization for men (a) and women (b) in Moscow (1984-1996) and Kazan (1996-2006) with 1 month sampling frequency (relative units in ordinate axis), and series of the Earth's rotational velocity and Wolf numbers for the same period

D.I. Aptikava, A.G. Gamburtsev, A.N. Martynov. Geologicophysical factors and human health: comparative analysis of the number dynamics of emergency hospitalizations in psychiatric hospitals of Moscow and Kazan

Russian people's health and mortality rate are especially dependent on cosmic energies.

Mortality rate from external causes is Russia in the second half of the 20th - early



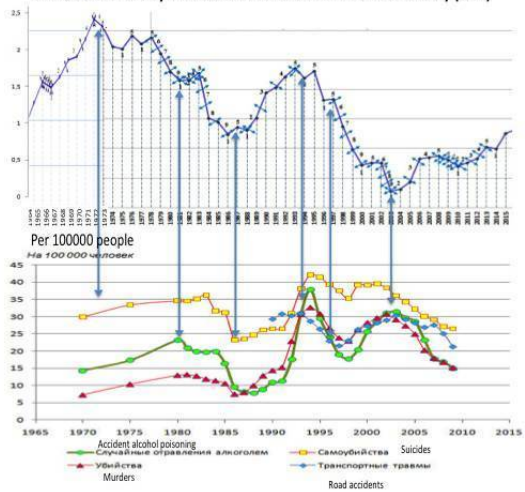
Earth's rotational velocity

Earth's rotational velocity

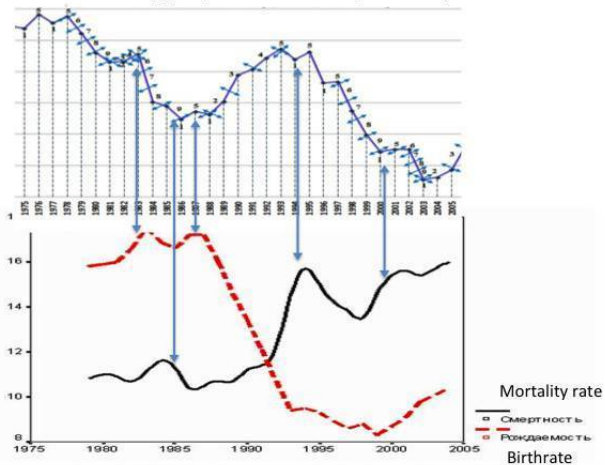
- Austria
- United Kingdom
- Holland
- Italy
- Portugal
- USA
- France
- Japan

- Bulgaria
- Hungary
- Spain
- Poland
- Romania
- Finland
- Sweden
- Russia

## Accidental mortality in Russia and the Earth's rotational velocity (LOD)



Birthrate, mortality rate in Russia per 1000 people and the Earth's rotational velocity (LOD) in the late XX - early XXI century

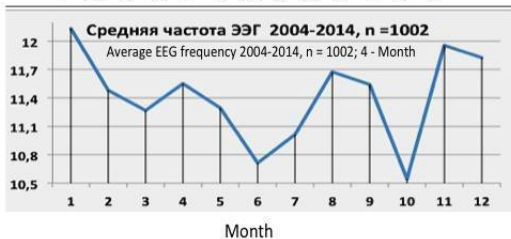
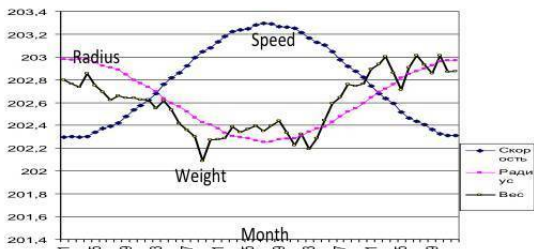


There is no mistake. For such dependencies were discovered for thousands of patients, ambulance call cases, both by doctor-scientists and statisticians.

But if health of Russian people depends on the Earth's rotational velocity, then this should affect their cardiograms and electroencephalograms. There is also a sample of thousands of subjects.

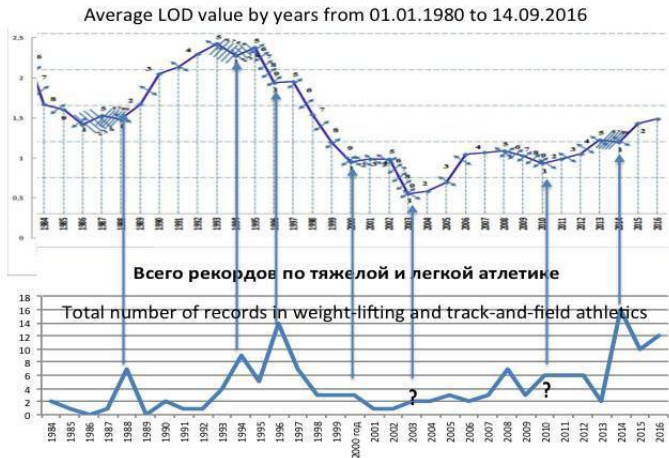
On the graph below, there is another indicator of cosmic energy – gravity. It changes with the change of the Earth's rotational velocity.

## Graphs of changes of the Earth's orbital velocity and the average EEG frequency



But if there are biological, physiological, mental changes in people depending on the Earth's rotational velocity, then this should affect sports achievements and our working capacity.

**The number of sports records in weight-lifting and track-and-field athletics in 2016, the Earth's rotational velocity (LOD) and their relationship with the stages of cosmic energy change cycles (1984-2016)**



On the example of hundreds of Russian and world record-holders, two trends have been identified.

1) Russian athletes win more often at point 5 (minimum of the Earth's rotational velocity) of the cosmic energies change cycle on a scale of days, whereas foreign ones – at point 1 (maximum of the Earth's rotational velocity) of that cycle.

2) Russian athletes win less often during growth of the Earth's rotational velocity.

Our athletes have set Russian records three times more often

at the point of 5-day change cycles of the Earth's rotational velocity.

*The achievements of Russian athletes significantly depend on cosmic energies, to a greater extent than the achievements of athletes in most countries of the world.*

Regarding athletes, the following relationships are identified.

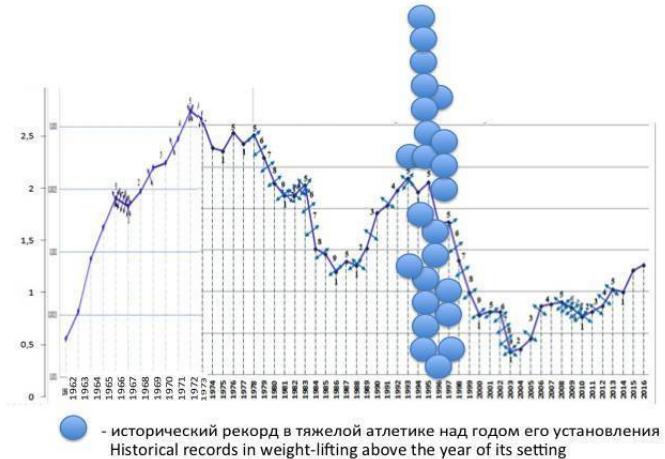
1. At different stages of the change in the Earth's rotational velocity the greatest success is achieved by the athletes who are predisposed by psychotype to activity, to higher achievements precisely at the given cosmic energies.

2. Russian athletes more often win and set the highest records, which are not beaten for decades, in the periods of slowdown of the Earth's rotational velocity.

3. At the stages of different Earth's rotational velocity, different techniques and even systems of selection and athlete training will be more effective.

These conclusions are proven by statistics: during the most successful years, in terms of intensity of the considered cosmic energies, Russian athletes set historical records that cannot be beaten to this day.

### Historical records in weight-lifting




There are many reasons for speculation and even doubts. But we will insist only on the obvious: **at different stages of the Earth's rotational velocity, different types of athletes make great sports achievements.** As well as various tree clusters grow differently at the different Earth's rotational velocity.

To obtain these results, the Earth's rotational velocity was divided into 9 sections: 1 – the highest velocity, 5 – the lowest. The personality type that is more active at point 1 was called type 1/1, the personality type that is more active at point 5 was called type 5/5. The fact is that such cycles exist both on the scale of

days and on the scale of years. Type 1/1 has personality traits, psycho-physiological features, which are identified both in day and annual cycles. The examples are presented in Chapter 9.1.

All sports achievements and athlete personalities, terrorist acts and personalities of famous terrorists, movement of stock markets and other markets, the most important historical events were digitized this way.

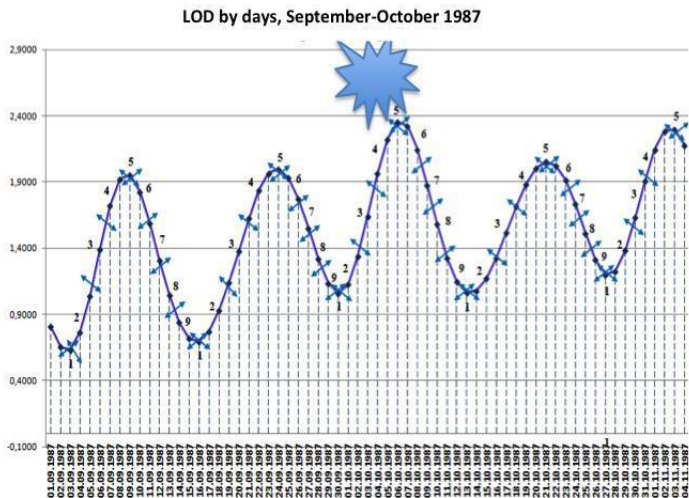
Here is an example of such digitization.

Competition type	Achievement	Name	Birth date	Which country represents	At which competition the record was set	Where the record was set	When the record was set
Snatch	166	Liao Hui	05.10.1987	 China	World championship	 Almaty	10.11.2014



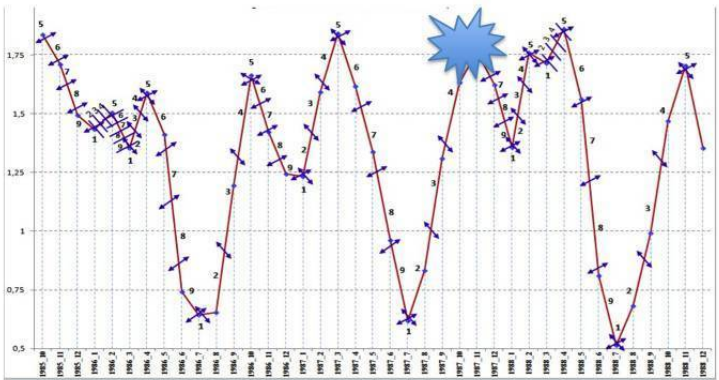
The code of day of setting the record, stage of day cycle = 1

The code of day of setting the record, stage of day cycle = 1



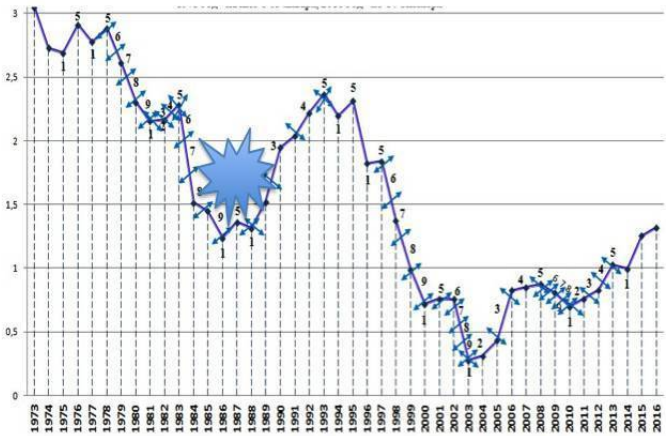
The code of date of birth, stage of day cycle = 5

October 1985 - December 1988, Average LOD values by months



The code of month of birth, stage of month cycle = 5

Average LOD values by years since 1973 to 2016, 1973 – beginning from January 03, 2016 - until September 14



The code of year of birth, stage of year cycle = 5

According to his birthday, this Chinese athlete is of type 5/5. These types are often particularly active on days of type 1/1. And vice versa. Chinese, like Russians, are very dependent on cosmic energies in their development.

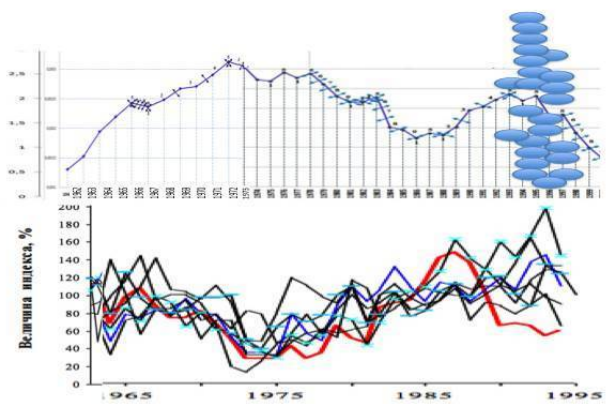
We have distinguished 9 stages of the change in the Earth's rotational velocity. The probability of setting a record or having a birthday at each individual stage is equal to 0.11. At the same time, code 1 of birthday of great historical record-holders

was 56.5%. That is, the probability is 5 times higher... But our athletes set records more often at slowdown of the Earth's rotational velocity. Taking into consideration the arguments and calculations presented above, the conclusion is obvious: the dependencies are certainly not random. And the years of great records being set match the years of the greatest difference in the tree growth rate.

For groups of people examined at different stages of the day and annual cycles the following data were obtained: EEG (electroencephalogram), ECG (electrocardiogram), solved test results, including those that diagnose intellectual qualities, personality traits, unconscious activity (Smirnov's technique etc.). This made it possible to predict changes in people at the change of the Earth's rotational velocity, at a certain arrangement of planets (which is related to the Earth's rotational velocity). This manifests itself in economic growth, in the growth of people's physiological activity and even biota, particularly in growth of tree rings.

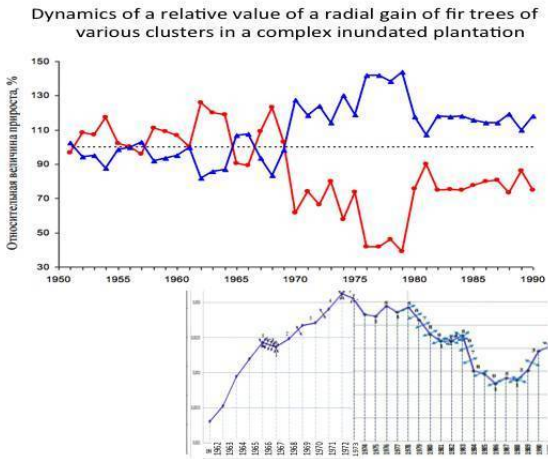
Yu. P. Demakov discovered two tree clusters: one of them grows better at the growth of the Earth's rotational velocity, whereas the other – at its slowdown. GDP growth rates of different countries, achievements of athletes are similarly divided into two clusters, two groups.

# Years of the set historical records in weightlifting and tree-ring gain according to U.P. Demakov



<http://csfm.volgatech.net/presentation/Demakov.pdf>

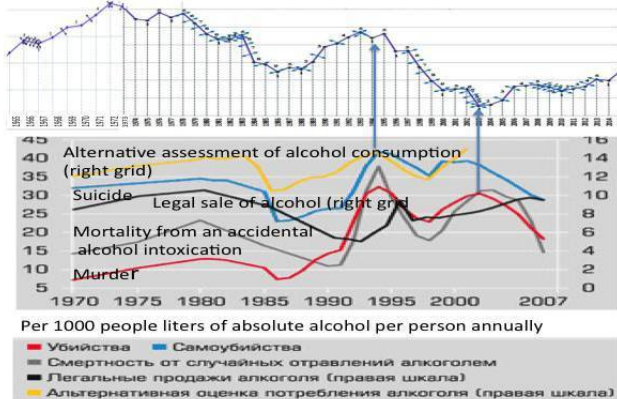
## Fir tree gain of various clusters (according to U.P. Demakov) and Earth LOD



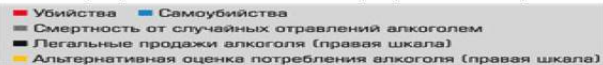
The Earth's rotational velocity is related to many diverse indicators, which are measured by statistics.

## Alcohol consumption and mortality from external causes change simultaneously with the Earth's rotational velocity change

They grow, when the Earth LOD leaves the best possible zone for the Russians

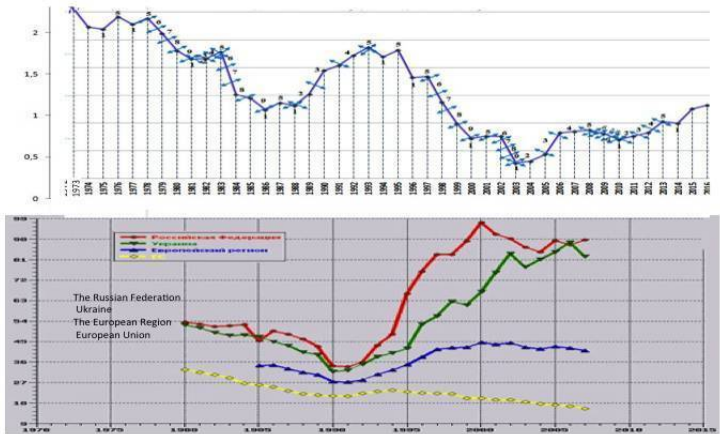


Per 1000 people liters of absolute alcohol per person annually



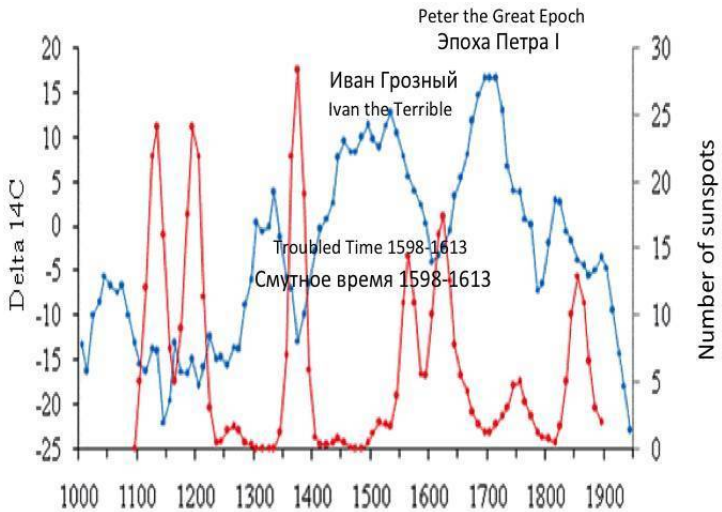
Source: Rosstat

## The Earth's rotational velocity and all-form tuberculosis morbidity rate scaled on 100 thousand population



We measure the Earth's rotational velocity by modern techniques since 1962, by instrumental techniques – since 1650. Up to that time, one can judge about the dynamics of changes in cosmic energies by isotopes forming in tree rings, ice cores, by tree ring width, by the Earth's average temperature and other indicators.

From the graphs built based on the given parameters one can infer informative historical conclusions.

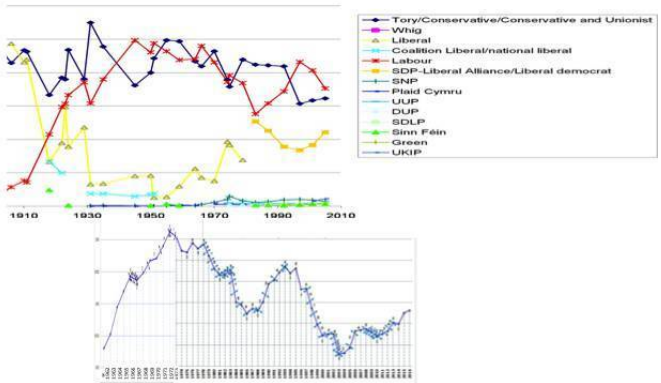


At peaks of cosmic energies, the heads of disobedient were cut and Russia was actively reformed. Whereas at minima of cosmic energies of the type, under the influence of which isotopes of various substances actively formed – the control over country was often lost, the social structure of society disintegrated.

People's political activity is also related to the Earth's rotational velocity. In England, people vote for the main parties in accordance with the Earth's rotational velocity. The composition of the main political parties also resonates with the Earth's rotational velocity.

## Voting results for the election to the English parliament and the earth's rotational velocity with the shift for one generation

Major vote by party in UK general elections, 1832-2005

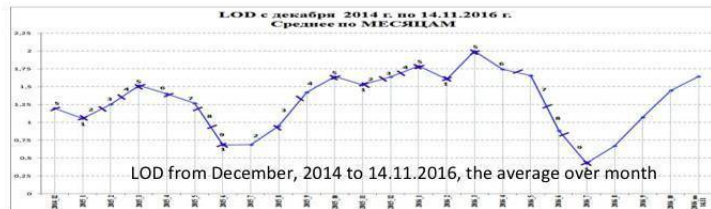


In Russia, social sentiment, political predilections substantially depend on cosmic energies associated with the Earth's rotational velocity. All revolutions in our country occurred at slowdown of the Earth's rotational velocity and growth of solar activity. Take into account that the cosmic energies associated with the Earth's rotational velocity are also associated with rotational velocities of other planets, with their mutual resonances. This was analyzed in detail (see Psycho-

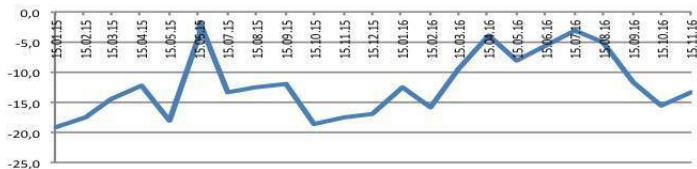
cosmic energies: protests, revolutions, leaps in development).

But even in our everyday worries, thoughts, moods and even in our fears we are dependent on cosmic energies.

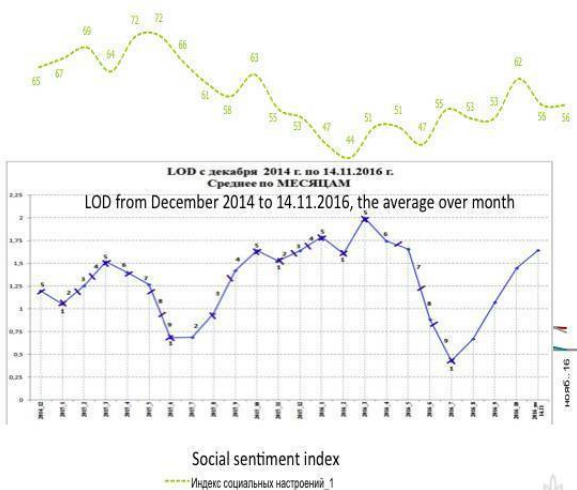
### Earth's rotational velocity (LOD) and population's expectation of earthquakes, disasters



### Expectations: flood, earthquake, other disaster Наводнение, землетрясение, другое стихийное бедствие



**Social sentiment index (All-Russian Public Opinion Research Center, ARPORC)  
and the Earth's rotational velocity in 2015-2016**



People perceive differently increase and decrease of cosmic energies associated with the Earth's rotational velocity. Like plants and biota as a whole, we are divided into groups, clusters, types, which develop better at the increase and decrease of cosmic energies associated with the Earth's rotational velocity.

The most important applied research result is the understanding of how a person changes at the different Earth's rotational velocities and different combinations of that velocity and solar activity. This knowledge has been translated at the level of statistical dependencies, expert systems, person type diagnosis

systems based on EEG (electroencephalogram), solved test results, birthdays and days of established personal achievements during lifetime. For every man, like an athlete, has his own achievements. For every person, those achievements more often took place either on days of type 1/1 or type 5/5. Hence, it is possible to forecast personal effectiveness for the forthcoming cosmic period. The fact is that people, like trees, are more active in their own cosmic period. Moreover, people that represent type 1/1 (as well as type 5/5) unconsciously unite. Type 1/1 is particularly active at the growth of the Earth's rotational velocity. Type 5/5 achieves more at the slowdown of the Earth's rotational velocity. The average lifetime of registered commercial structures in Europe is about 12 years not by chance. This is related to the rotation cycle of Jupiter and Saturn around the Sun, which affects the change in the Earth's rotational velocity. Hence, selection and timely replacement of directors, top managers and personnel taking into consideration the identified dependencies is the company's survival condition in the market.

The fall of empires is related to the similar dependencies (see "The breath of history"). In Russia, the greatest achievements among population throughout history took place at the slowdown of the Earth's rotational velocity.

People's dependency on cosmic energies associated with the Earth's rotational velocity is considered at physiological level: scientific ideas, theories, hypotheses, experimental data on this

topic are generalized (see “Man in vortex of ether”).

These results are not clear to many narrow specialists. That is why they are translated to the language understandable to thinking people, to graphs and images. Depending on the agreement between the personality type and the needs for historical development, the given cosmic energies, everybody are conditionally separated into resonators (are in resonance with cosmic energies) and post-resonators. Type 1/1 and type 5/5 repeatedly change over, similar to the changes of tree clusters that grow at positive and negative correlation with the Earth's rotational velocity.

## Main Personality Traits Of Resonators and Post-Resonators

Resonator	Post-Resonator
Pendular-kinesthetic intelligence	Auditory intelligence type
Kinesthetics	Auditorists
Domain experts	Social motivators
Metaprogram of the future	Metaprogram of the present
Rational requirements	Irrational requirements
Strive for cost saving	Strive for maximal profit
Internal reference	External reference
Metaprogram "HOW"	Metaprogram "WHAT"
Metaprogram of achieving	Unfounded abrupt change of metaprograms to the opposite ones
Metaprogram "common"	Metaprogram "defferent"
Paranoid features with compensatory traits	Hysteroid features without compensatory traits
Major personality trait – "need to"	Major personality trait – "want to"
Maniac features, in case it's not a profession connected with the risk	Maniac features, in case the profession requires contrasting traits
Ability of assessment based on the system data	Ability of assessment based on the separate facts
The main things are the truth and facts	The main thing is movement
Pronounced spiritual values	Pronounced material values
Minimization of protective reactions	Activity of protective reactions
Gives more that takes	Takes more than gives
Striving for exact sciences, knowledge	Striving for irrational constructions
Good family people	Decrease in the influence of the family
Minimal psychiatric disorders. There are accentuations	Increase in psychiatric disorders with age
Naturally subordinate to "religious establishment"	Naturally subordinate to "corporal elite"
Fight against asocial biological instincts	Life in accordance with the biological instincts that masked
For personality changing, inner values and meanings should be changed	For personality changing, external environment should be changed at first
Striving for "being"	Striving for "seeming"

See: Intelligence of the Manager: for Experts and Researchers. – M.: p. 128 – 148.

Resonators are the people whose activity is adequate to cosmic energies. They have enough energy to build an accurate picture of the world and to transform it and themselves. Whereas post-resonators do not have this energy and are forced to earn for a living by means of imitative behavior, often with the help of words, using trance guidance techniques. They are often good talkers, but bad practitioners. However, their techniques of influence on surrounding people are so perfect that they can cajole their chiefs for years using their skills. EEG techniques

and other methods help to identify these different types of people in time (resonators and post-resonators, type 1/1 and type 5/5).

Cosmic energies change cyclically. And if so, then at some historical time type 1/1 will be more effective, while at another time – type 5/5. At each distinct cosmic time, there are different resonators and post-resonators.

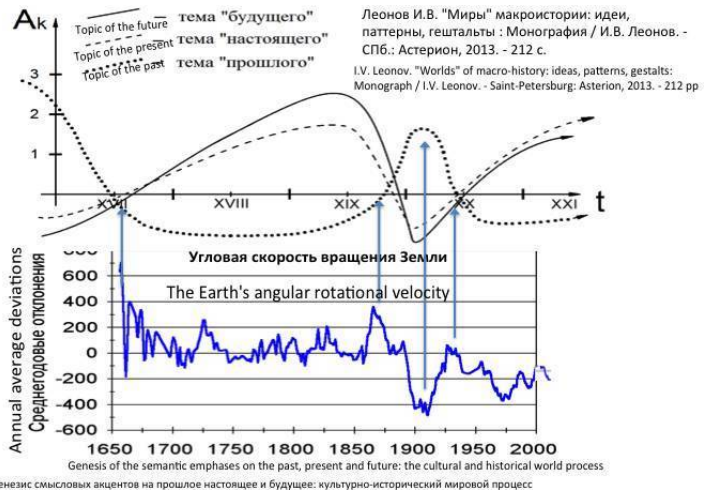
In the past, the society developed this way. Nowadays, the elite has created such mechanisms of people management that prevent resonators, the people of new type, from coming to power. This is one of the reasons of the decrease in economic growth rate, degradation of countries. This can be compared to trees that grow better due to cosmic energies but are not given water, fertilizers and comfortable temperature. Some trees do not grow well because of these reasons, whereas some other – because it is not their cosmic time. As a result, the whole forest dries out... In society, one type of people takes over the power in the state created by them and does not pass it to those who can provide an impulse to mankind development during their cosmic time.

The knowledge is important. But perception of this knowledge by general public is possible only if it is included in the system of generally accepted, taught at school, at universities. Therefore, it is important to replace the term "cosmic energies associated with the Earth's rotational velocity" with the common parameters of modern science. Those are electromagnetic energies, gravitational energies, the energy of galactic cosmic rays, etc. It turned out that the Earth's rotational

velocity resonates, corresponds to the dynamics of change of these energies. Moreover, for empirical perception of the studied problems it is important to convert the Earth's rotational velocity into the indicators that are not so abstract when perceived emotionally. These are the tree rings growth rate, the isotope forming of various substances in ice cores and tree rings, the temperature on Earth, the humidity, the presence of groundwater according to the Earth's rotational velocity, the change of magnetic poles on the Sun, the change of its surface temperature, etc. It turns out that all these very important and controversial phenomena are related to the Earth's rotational velocity. These relations allow to use the system indicators, the parameters for determining the moment when one type of people in the elite, the management board, should be replaced with another. Surprising, but Chinese scientists have already understood this. Even more surprising is that Chinese philosophers of the past also understood this. They understood that nations, countries, like people, develop at their own specific cosmic energies. Cycles of cosmic energies are associated with the cyclic development of mankind and nations.

There are deep studies which recorded the mass manifestation of one or another personality trait, a meta-program at a certain stage of mankind development.

## Topic of the past, the present and the future in the world culture and the Earth's rotational velocity



Генезис смысловых акцентов на прошлое настоящее и будущее: культурно-исторический мировой процесс

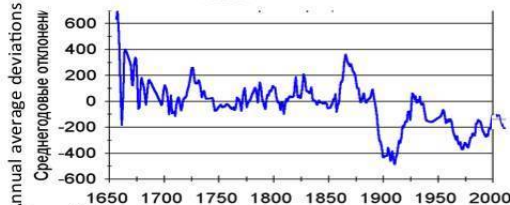
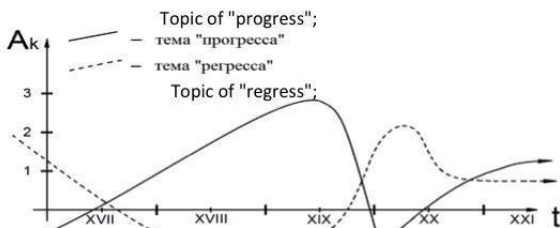
With the abrupt change of the Earth's rotational velocity in the early 1900s, the topic of philosophical understanding of reality also changes within the past-future meta-program: the interest to the past increases. At the peaks of the Earth's rotational velocity growth the priorities of philosophical, spiritual and literary aspirations change.

This is like the growth of trees of different clusters. When the sign of acceleration of the Earth's rotational velocity changes in ten-year, hundred-year cycles, poorly growing trees are replaced with a generation of trees that grow better exactly at this cosmic

epoch.

In society, with the abrupt change of the Earth's rotational velocity happens the abrupt change of the whole culture, the aggravation of the struggle between progressive and regressive views.

### Topic of regress and progress in the world culture and the Earth's rotational velocity



I.V. Leonov. "Worlds" of macro-history: ideas, patterns, gestalts : Monograph / I.V. Leonov. - Saint-Petersburg: Asterion, 2013. - 212 pp.

Леонов И.В. "Миры" макроистории: идеи, паттерны, гештальты : Монография / И.В. Леонов. - СПб.: Астерион, 2013. - 212 с.

The changes in culture, in philosophical views, in literature – are forerunners of the future changes in society. In fact, these are the graphs of cyclic occurrence and appearance of resonators,

the passive, and post-resonators, the sub-passive.

In nature, the change of tree clusters and biota happens automatically, but optimally enough for development. In human society, this process is still very spontaneous in the fields of culture, art, philosophy, but already needs management in economy, state building. For it is difficult to automatically change the banking elite with the features of post-resonators to the resonators, practitioners, domain experts. Elite of the previous cosmic epoch will resist mercilessly.

What should be done?

Conclusion on Chapter 1

The world is currently at the turning point in its development. It is impossible to understand patterns and stages of this development, to precisely determine its goals without understanding the influence of cosmic energies on mankind. Knowledge of the coercive type is important here. Therefore, throughout this paper we provide graphs and describe patterns that were discovered by various independent researchers. They are objective. Such presentation of material counts on common sense, when it becomes critical and prevents us from making sound decisions regarding the arrangement of Russia. Common sense should become a coercive factor in the arrangement of Russia.

**Chapter 2. Energy of gravitational, electromagnetic fields, of the Earth's rotational velocity, and the**

# **corresponding clusters of plants, animals and types of people**

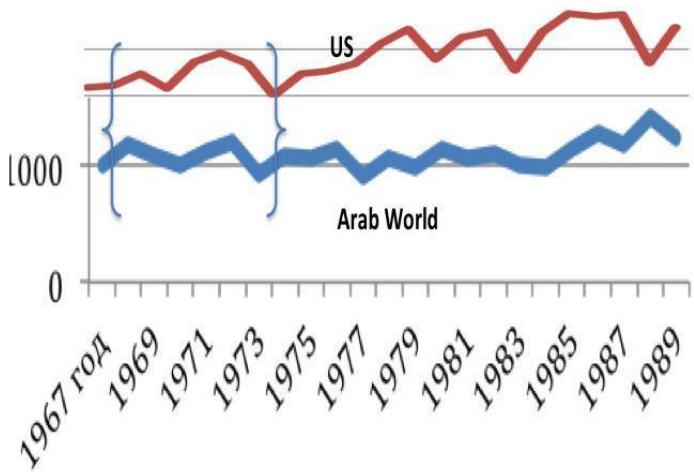
## ***2.1 Clusters of plants and types of people depending on the change of cosmic energies***

### **2.1.1 Clusters of plants and animals**

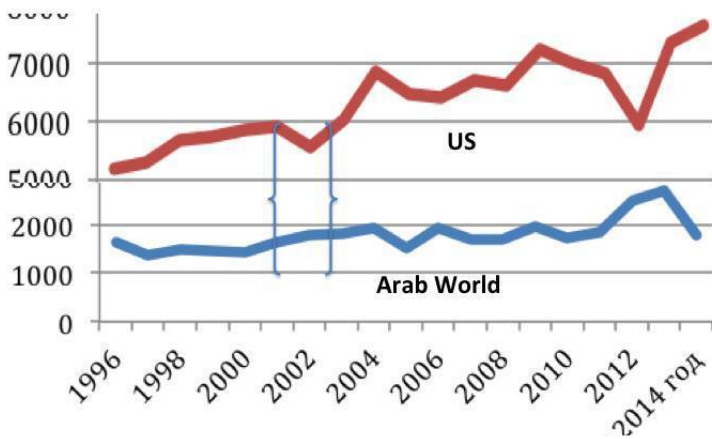
If the dependency between biota development and the Earth's rotational velocity is universal, then this trend will also manifest itself in the growth of cereals. The World Bank possesses the comprehensive data regarding the growth of cereals. Yes, the variability of cereal growth yield must be fully manifested due to the factors considered by scientists in the tree ring growth formula (see Chapter 3), but with addition of the most essential that spans all the natural – cultivation technologies. This is the use of fertilizers, irrigation, herbicides, seeds, biotechnology etc. The technological factor mostly determines the growth of cereals: yield is higher year by year, decade by decade.

Nevertheless, there are countries in which there is still the difference in cereal growth depending on the Earth's rotational velocity. E.g., the USA and Arab countries have relatively opposite GDP and cereal growth rates depending on the Earth's rotational velocity.

Cereal yield (kg per hectare) 1967 – 1989 US and Arab World

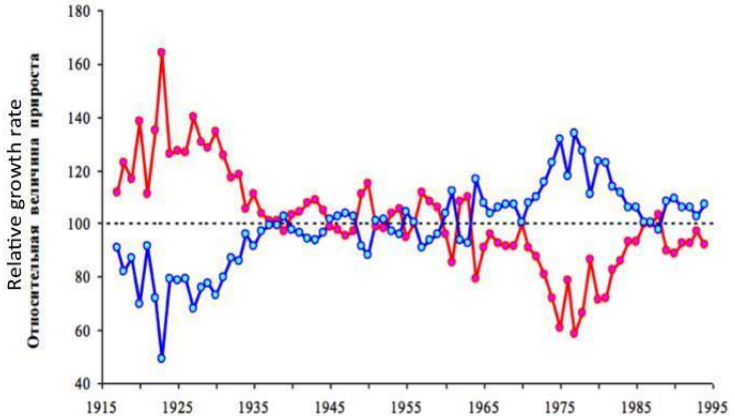


Cereal yield (kg per hectare) 1996 – 2014 US and Arab World



Let us look at the graph of tree rings growth of different clusters provided by Yu.P. Demakov.

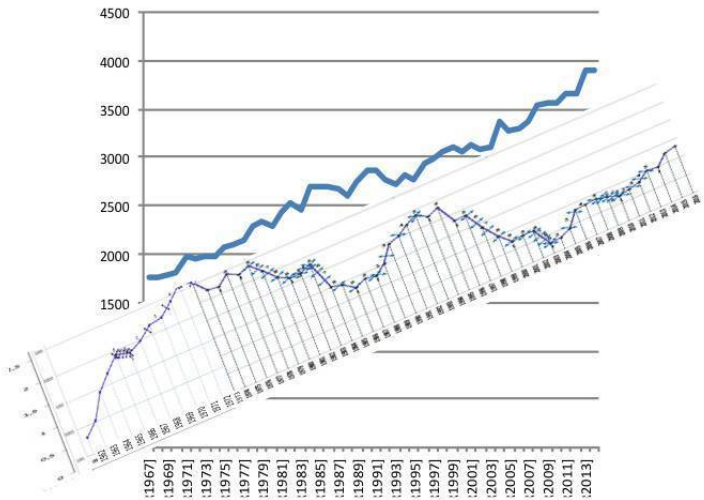
## Dynamics of relative annual pine tree growth of different clusters in cultivation



Ref.: Yu. P. Demakov. Factors of annual tree growth dynamics. <http://csfm.marstu.net/presentation/Demakov.pdf>

There is an analogy. Is there a relationship between the cereal yield growth in the world and the Earth's rotational velocity?

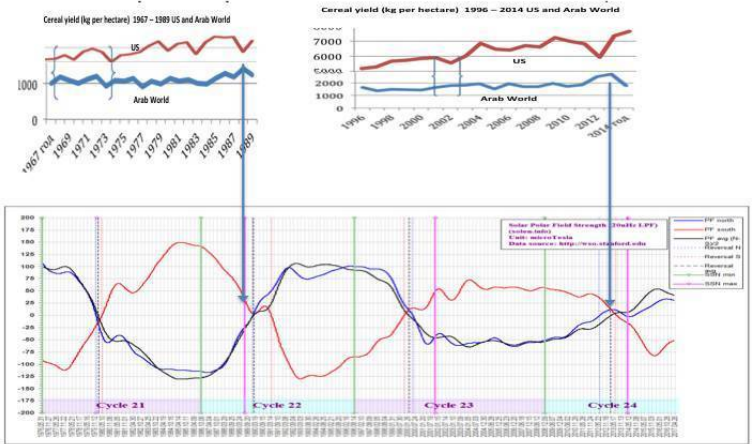
## Cereal yield in the world and the Earth's rotational velocity



Yes, there is such a relationship. But it mostly manifested itself in the 90s. At the beginning of the XXI century it became less pronounced. Note: correlation between the tree growth and the Earth's rotational velocity is negative in Russia, whereas for the cereals worldwide it is positive.

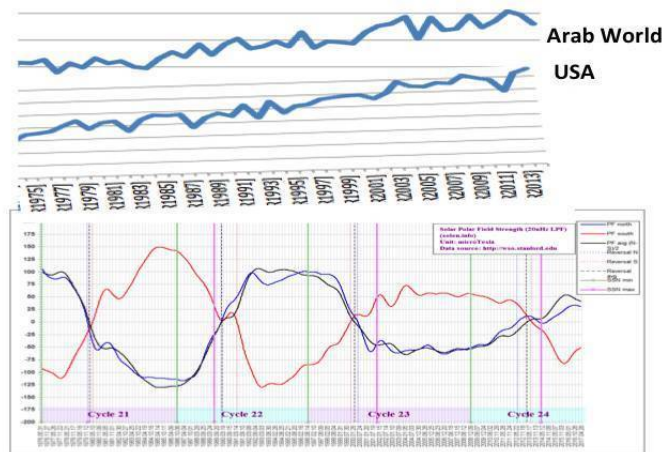
Will these dependencies remain regarding the intensity of the northern and southern solar magnetic fields?

# Comparative cereal yield in the USA in the period of inversion of the northern and southern solar magnetic poles



On the graph above the cereal yield in Arab countries and in the USA is time-coordinated with the change of intensity of the solar magnetic field.

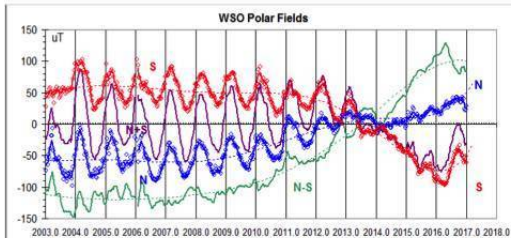
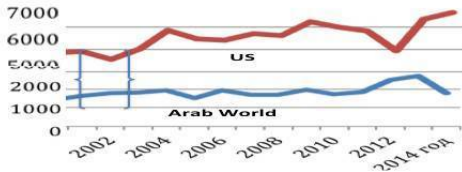
## Intensity of the northern and southern poles of the solar magnetic field and cereal yield in the USA and Arab World countries



Let us enlarge the part of the graph, which is closer in time to the inversion of the magnetic field on the Sun in 2013.

## Change of solar magnetic fields and cereal growth in the USA and Arab World

Cereal yield (kg per hectare) 1996 – 2014 US and Arab World



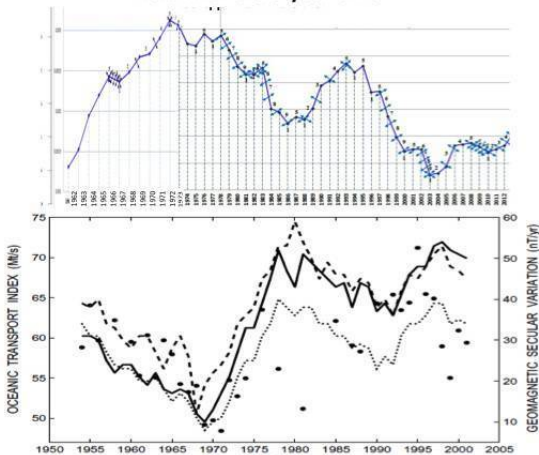
In the USA, cereal yield is higher than in Arab countries when the northern magnetic pole is positive. With the sign change of the solar magnetic pole the graph of cereal yield growth in these countries diverges. For the cereals that grow in the USA the period when the northern magnetic pole has a positive charge is more favorable. Whereas for the cereals that grow in Arab countries the period when the northern magnetic pole has a negative charge is more favorable. But this is also connected with the Earth's rotational velocity.

Magnetic fields of the Sun and the Earth, as well as the

velocity of its rotation, are all interconnected.

There is the graph to support this:

**Rotational velocity (LOD) and change of the Earth's geomagnetic field with the 5-year shift**



<http://www.creationtheory.com/climatechange.html>

First, the Earth's magnetic field changes, after that – its rotational velocity. Although, at the scale of hundreds of years, this shift is not very noticeable.

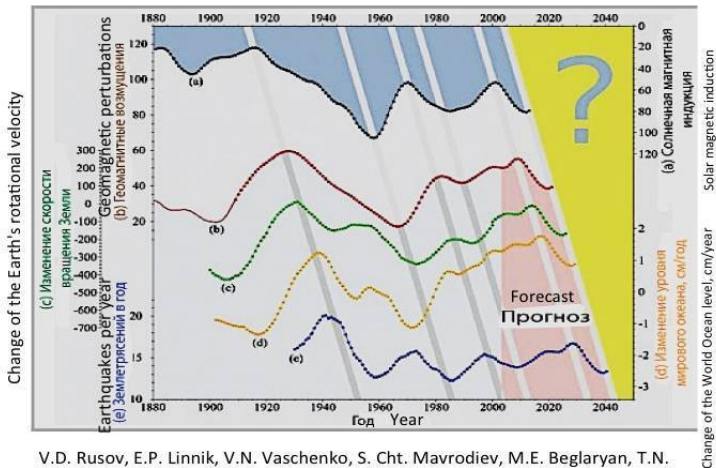
Growth of plants is statistically related to the change of the Earth's magnetic field and with the change of its rotational velocity. Take into account that in different regions of the Earth the change dynamics of the magnetic field varies. Therefore,

the shift to obtain a mapping between the graphs of the Earth's rotational velocity and the magnetic field intensity might be different in time.

The difference in cereal growth in the United States and Arab countries is higher at the greater difference in the intensity of the southern and northern solar magnetic fields.

Intensity of the solar magnetic pole is related to intensity of the Earth's magnetic pole. This relationship can be understood by analyzing the graph of Ukrainian scientists (V.D. Rusov, et al., 2011).

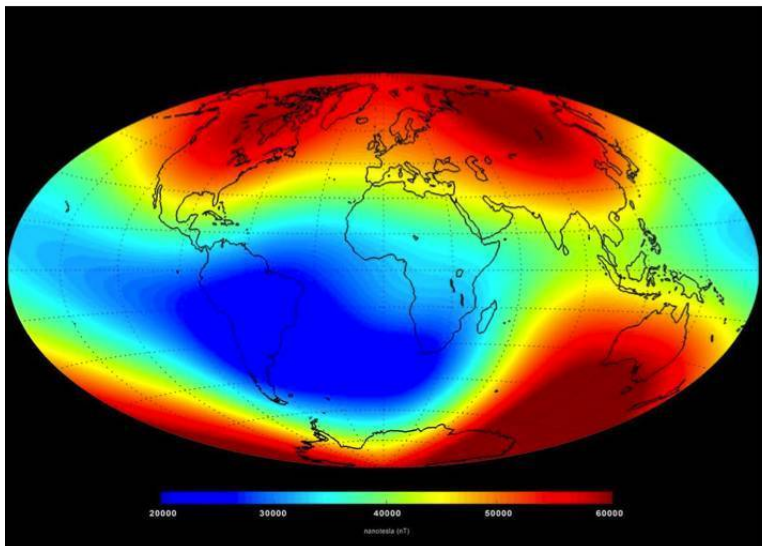
### Magnetic activity of the Sun and mega-processes on the Earth



V.D. Rusov, E.P. Linnik, V.N. Vaschenko, S. Cht. Mavrodiiev, M.E. Beglaryan, T.N. Zelenitsova, V.A. Tarasov, D.A. Litvinov

There is a relationship, a correspondence, but it is shifted in time.

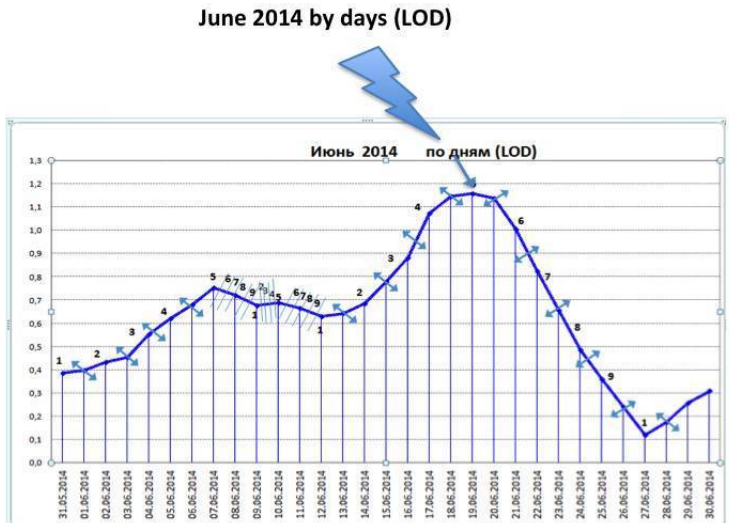
What relationship is there between the cereal yield in the world and the intensity of the Earth's magnetic field? To learn this, let us take the data of space monitoring of the magnetic field intensity in various regions of the Earth.



Swarm reveals Earth's changing magnetism, ESA, 19 June 2014, [http://www.esa.int/Our Activities/Observing the Earth/](http://www.esa.int/Our_Activities/Observing_the_Earth/)

## Swarm/Swarm reveals Earth's changing magnetism

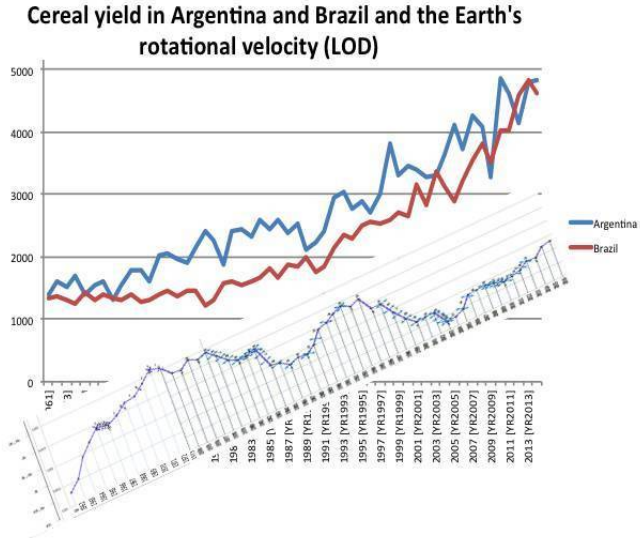
We will also present a graph of the change in the Earth's rotational velocity on the day when the data of its magnetic field were obtained.



It can be seen that the intensity of the magnetic field over North America is higher than over Arab countries. Then maybe this is the reason why we have a difference in cereal growth rates?

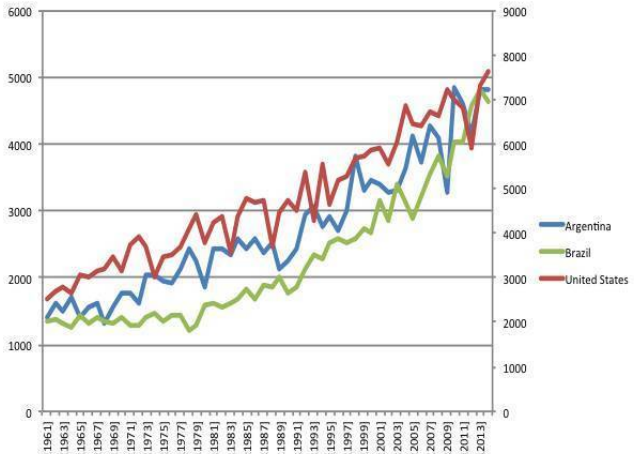
We will recheck this by comparing cereal growth in the world (matches cereal growth in the USA) with the growth in Argentina

and Brazil where the magnetic field intensity is much lower.



Let us compare it with cereal yield in the USA.

## Cereal yield in Brazil, Argentina, the USA



Yes, the trends of yield growth by years are relatively opposite. Although growth prevails in all countries. And correlation between these data is positive. Whereas each year fluctuations, deviations from mean values, anomalies are relatively opposite.

# Конец ознакомительного фрагмента.

Текст предоставлен ООО «ЛитРес».

Прочитайте эту книгу целиком, [купив полную легальную версию](#) на ЛитРес.

Безопасно оплатить книгу можно банковской картой Visa, MasterCard, Maestro, со счета мобильного телефона, с платежного терминала, в салоне МТС или Связной, через PayPal, WebMoney, Яндекс.Деньги, QIWI Кошелек, бонусными картами или другим удобным Вам способом.