

Scientific center Bemkon

Konyuhov N., Arhipova O., Konyuhova E., Hayrullin A.

**In resonance with cosmic energies:
terrorism and marketing**



16+

Николай Игнатьевич Конюхов
In resonance with cosmic
energies: terrorism and marketing

http://www.litres.ru/pages/biblio_book/?art=38010274

SelfPub; 2018

Аннотация

This book is about the facts of fundamental dependency between the mankind development and cosmic energies: both electromagnetic and non-electromagnetic ones. The facts are systematized in graphs.

Introduction

For decades, research centers were systematically studying the human changes in the process of practical, as well as industrial, activity, considering the factors of cosmic activity.

The essence of the obtained scientific results is in a definite consequence: it is impossible to understand the development of mankind and Russia without considering the cosmic energy factor in a scientific analysis.

Sometimes, at websites a number of visitors and buyers sharply increases, and sometimes sharply drops. Unexpected data: this depends on the Earth's rotational velocity, on the change in the sign of the acceleration of its rotation. This involves a change in psyche of people.

To understand the essence of such dependencies is difficult without accepting the idea of cosmic ether and its influence on all living things.

There are three mechanisms for changing the density of the etheric medium in which Earth is located:

1. Change in the speed of movement of Earth in space with a constant density of the ether. The Earth's velocity increases cyclically from aphelion to perihelion, where it reaches a maximum, and then decreases to aphelion. In addition to the speed of Earth affects the change in its position relative to other planets of the solar system, the force of gravity. The greater the speed of Earth – the more ether passes through humanity, and

the planet itself slows down its rotation. The indicator of these changes is the length of Earth day (LOD – length of a day), the change of which is measured in milliseconds. The greater the density of the ether surrounding Earth, the greater is the LOD.

2. Change in the density of the cosmic ether into which the solar system enters. In this case, not only does the Earth's rotational velocity slow down, but also the speed of the flight of the solar system. A sign of this is the increase or decrease in LOD from year to year.

3. "Resonances" between planets that perturb the ether with their rotation, oscillations. When Earth passes through these vortices, it falls under the additional movement of the ether.

If, for some reason, the adoption of these provisions for the initial meets internal resistance, then you can get acquainted with all the previous work of the scientific centers "Biryuch" and "Bamkon" 2015, 2016, 2017.

If this does not dispel doubts, then you can consider the opinion of A. Poincare: there is no ether, but everything happens as if it is.

If this psychiatric method does not help, then everything can be explained by the ingress of Earth into denser layers of baryonic matter. Opinion from solid, recognized scientific work: "For the first time in Russia, according to ground-based measurements, an acoustic-gravity signal with a maximum amplitude of 45 dN/cm squared is presumably from an explosion in the atmosphere of the Vitim bolide on September 24, 2002

at a distance of 4000 km from the source. In this case, plausible values of the direction and velocity of signal propagation were obtained. The analysis of this event confirms the facts obtained earlier that bright bolides of a large mass can create powerful pulsed radiation of acoustic-gravitational waves in the Earth's atmosphere, which can be fixed by microbarographs at a distance of several thousand kilometers. Note that the acoustical-gravity signal from the explosion of the car in this frequency range (from 0.0001 to 1 Hz) was recorded for the first time in the world, which was noted in the works of ReVelle, 2004; Edwards et al., 2006 ". [Kasatkina E.A., 2016, p. 143].

Gravitational energy when the substance gets into our atmosphere increases. And it actively influences the growth of trees. And their growth is connected with the development of mankind. That's it!

In classical science, experimental data have appeared that allow us to link the development of mankind, our nature with gravity-spin energies.

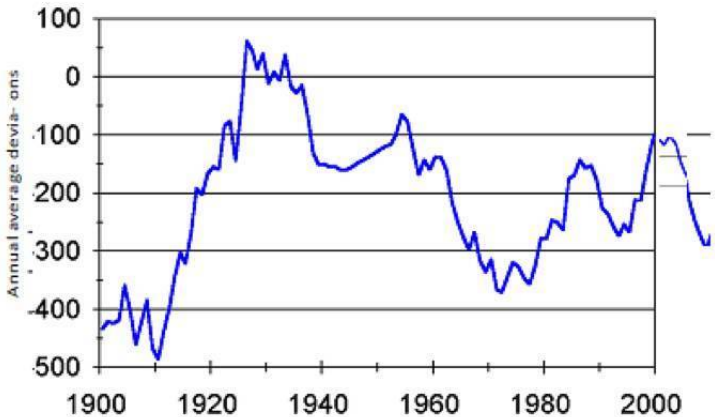
So we can assume that both there is the ether, and there is not exist, but there is simply a tiny baryonic substance. In this most important point of our analysis, the conclusions of the representatives of classical and new physics converge. And psychologists and sociologists do not need more.

But with the involvement of the conclusions of ether-dynamics it is easier to understand the logic of reasoning, to remember the available statistics, to apply the methods available

in this field more creatively. We develop faster when the density of the cosmic ether increases.

Chapter 1. Cosmic energies and mankind: graphs for reflection

Annual average deviation values of the average Earth's rotational velocity

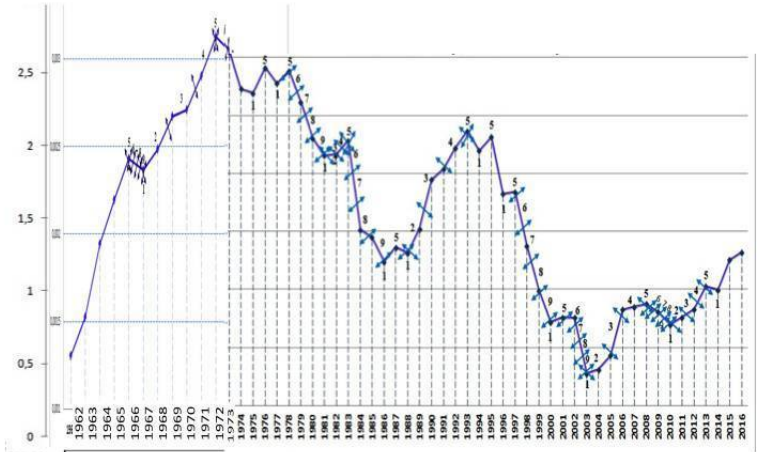


The figure shows the value change over time for the 1900 – 2000 period. The axis of ordinates in these figures is given in units (see V.D. Kokurov).

The graphs of the Earth's rotational velocity are mirror-like to

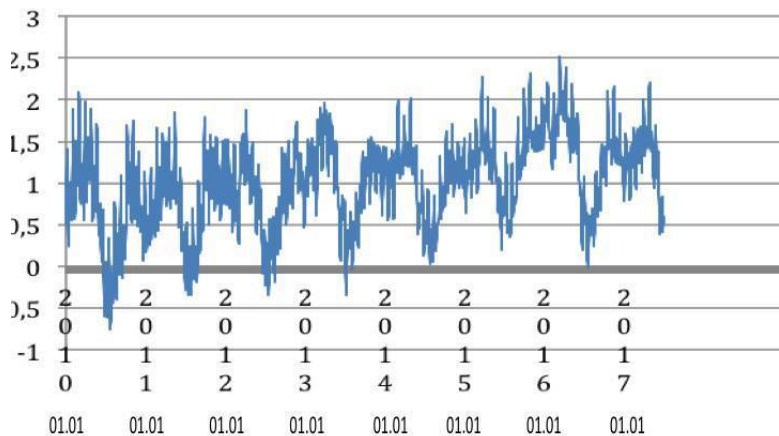
the graphs of the length of day – LOD. LOD is measured highly accurately and placed at the websites of laboratories around the world.

Earth LOD data since 1962 in ms
average for the year

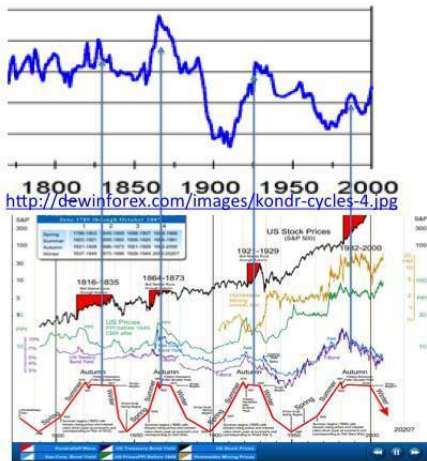


Average by day:

LOD 2010 - 2017

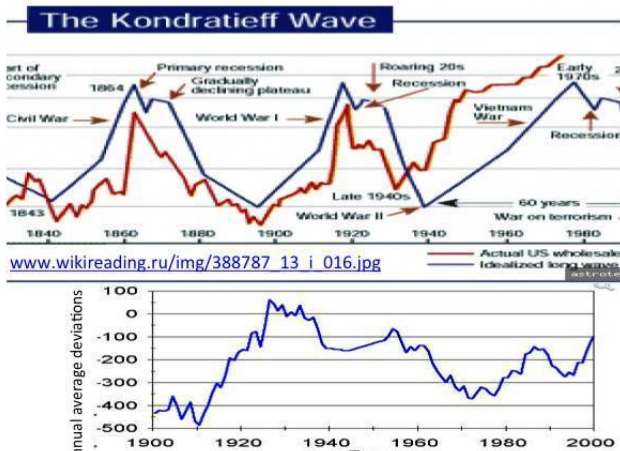


The Earth's angular rotational velocity and Kondratieff cycles



<http://dewinforex.com/images/kondr-cycles-4.jpg>

The Earth's angular rotational velocity and Kondratieff cycles with the displacement in 30 years



www.wikireading.ru/img/388787_13_i_016.jpg

Let us combine them with the well-known graphs of economists.

All fundamental economic and socio-political processes are visually related to these graphs.

Fundamental economic indicators of the USA development
and the Earth's rotational velocity



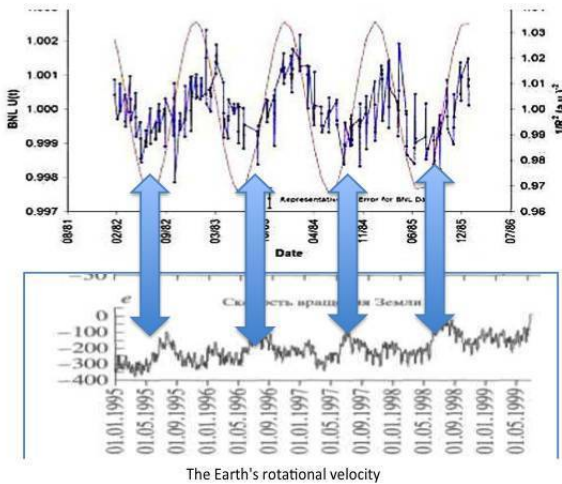
http://nowandfutures.com/key_stats.html

The system of such graphs has been obtained for different countries and for different economic and financial indicators. It leaves no doubt that the Earth's rotational velocity reflects powerful cosmic energies.

They affect economic processes on Earth, and are also related to the intensity of isotope decay. Scientists of the Brookhaven laboratory in the United States have discovered the annual periodicity of the decay process of silicon isotopes. It is correlated to the value, where is the distance between the Earth

and the Sun. At the same time, it is an indicator of the Earth's orbital movement velocity. In winter, at perihelion, it is maximal (the distance to the Sun is minimal), whereas in summer, in aphelion, it is minimal. With the change of the Earth's orbital movement velocity its axial rotational velocity also changes.

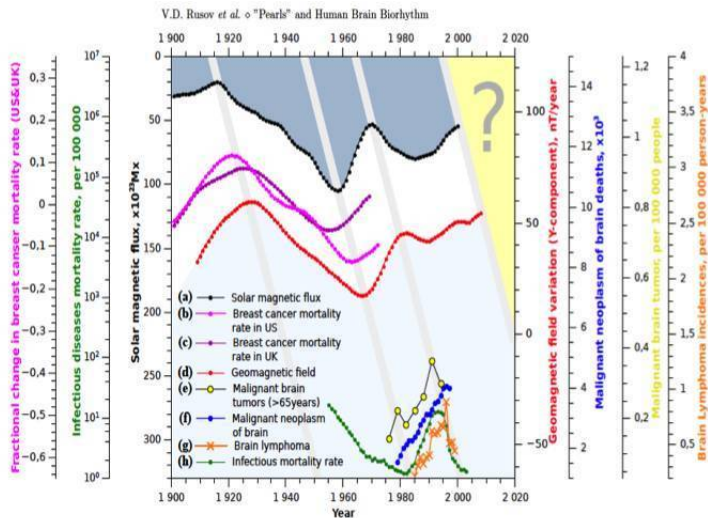
Comparative graph of the silicon isotope ^{32}Si half-life and the Earth's rotational velocity



СМ.: JereH. Jenkins, EphraimFischbach, JohnB. Buncher, JohnT. Gruenwald, DennisE. KrauseandJoshuaJ. Mattes, «EvidenceforCorrelationsBetweenNuclearDecayRatesandEarth-

SunDistance» (arXiv:0808.3283v1 [astro-ph]).

Solar activity is a concrete manifestation of cosmic energies. There are profound works in this field.



Time evolution

(a) the variations of magnetic flux at the bottom (tachocline zone) of the Sun convective zone (see Dikpati, G. de Toma, and P. A. Gilman, 2008);

(b) fractional change in female breast cancer mortality (see: Juckett David A., 2009);

(c) fractional change in female breast cancer mortality for birth cohort in UK (see: Juckett David A., 2009);

(d) geomagnetic field secular variations (Y-component, nT/year) as observed at the Eskdalemuir observatory (England) (see: http://www.geomag.bgs.ac.uk./gifs/annual_means.shtml), where the variations (gY/gt) are directly proportional to the westward drift of magnetic features;

(e) Malignant brain tumor (brain stem) (see: Legler Julie M., 1999) ;

(f) the number of deaths from ICD9 item n 191 Malignant neoplasm of brain (see: Pechholdova M., 2008);

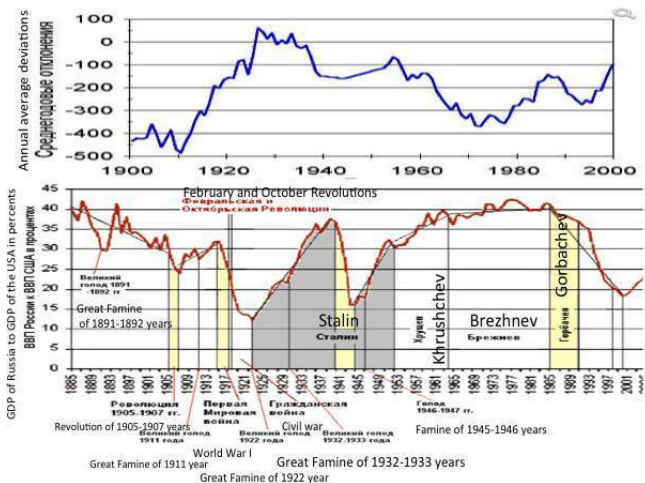
(g) Brain lymphoma incidences in US;

(h) the mortality rates from infectious diseases (incl. Tuberculosis) at ages 15 – 34 in France (see: Mesle F., 2006);

The curves (a) and (b) are smoothed by the sliding intervals of 5 and 11 years.

Such an integral indicator as the GDP growth rate also depends on the Earth's rotational velocity. This dependency is different in different countries.

Correlation of the Earth's rotational velocity change and the relation between GDP of the USSR and Russia to the USA



But the GDP growth is determined by the people's labor activity. Naturally, people changes are also dependent on the Earth's rotational velocity.

On the example of hundreds of Russian and world record-holders, two trends have been identified.

1) Russian athletes win more often at point 5 (minimum of the Earth's rotational velocity) of the cosmic energies change cycle on a scale of days, whereas foreign ones – at point 1 (maximum of the Earth's rotational velocity) of that cycle.

2) Russian athletes win less often during growth of the Earth's

rotational velocity.

Our athletes have set Russian records three times more often at the point of 5-day change cycles of the Earth's rotational velocity.

The achievements of Russian athletes significantly depend on cosmic energies, to a greater extent than the achievements of athletes in most countries of the world.

Regarding athletes, the following relationships are identified.

1. At different stages of the change in the Earth's rotational velocity the greatest success is achieved by the athletes who are predisposed by psychotype to activity, to higher achievements precisely at the given cosmic energies.

2. Russian athletes more often win and set the highest records, which are not beaten for decades, in the periods of slowdown of the Earth's rotational velocity.

3. At the stages of different Earth's rotational velocity, different techniques and even systems of selection and athlete training will be more effective.

These conclusions are proven by statistics: during the most successful years, in terms of intensity of the considered cosmic energies, Russian athletes set historical records that cannot be beaten to this day.

Historical records in weight-lifting



There are many reasons for speculation and even doubts. But we will insist only on the obvious: **at different stages of the Earth's rotational velocity, different types of athletes make great sports achievements.** As well as various tree clusters grow differently at the different Earth's rotational velocity.

To obtain these results, the Earth's rotational velocity was divided into 9 sections: 1 – the highest velocity, 5 – the lowest. The personality type that is more active at point 1 was called type 1/1, the personality type that is more active at point 5 was called type 5/5. The fact is that such cycles exist both on the scale of

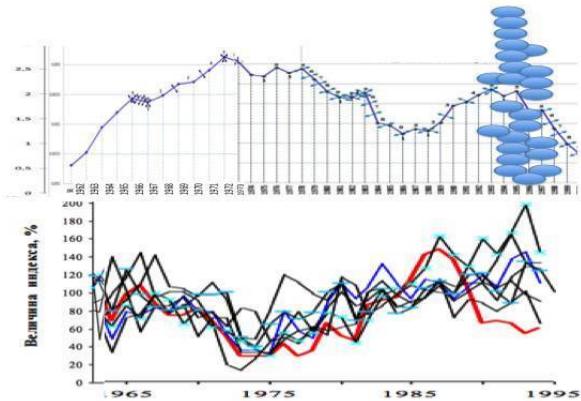
days and on the scale of years. Type 1/1 has personality traits, psycho-physiological features, which are identified both in day and annual cycles.

All sports achievements and athlete personalities, terrorist acts and personalities of famous terrorists, movement of stock markets and other markets, the most important historical events were digitized this way.

For groups of people examined at different stages of the day and annual cycles the following data were obtained: EEG (electroencephalogram), ECG (electrocardiogram), solved test results, including those that diagnose intellectual qualities, personality traits, unconscious activity (Smirnov's technique etc.). This made it possible to predict changes in people at the change of the Earth's rotational velocity, at a certain arrangement of planets (which is related to the Earth's rotational velocity). This manifests itself in economic growth, in the growth of people's physiological activity and even biota, particularly in growth of tree rings.

Yu. P. Demakov discovered two tree clusters: one of them grows better at the growth of the Earth's rotational velocity, whereas the other – at its slowdown. GDP growth rates of different countries, achievements of athletes are similarly divided into two clusters, two groups.

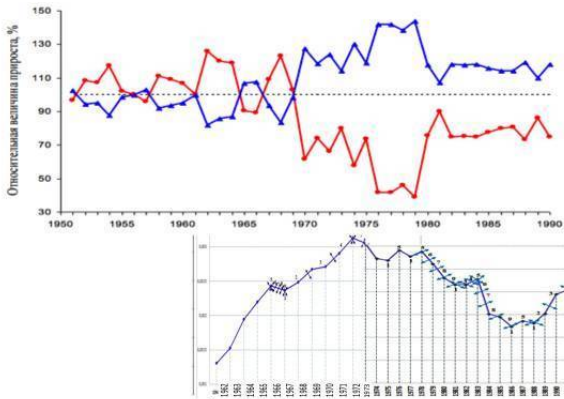
Years of the set historical records in weightlifting and tree-ring gain according to U.P. Demakov



<http://csfm.volgatech.net/presentation/Demakov.pdf>

Fir tree gain of various clusters (according to U.P. Demakov) and Earth LOD

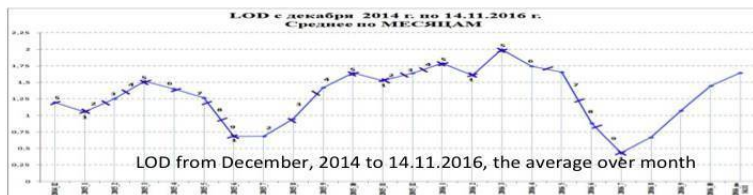
Dynamics of a relative value of a radial gain of fir trees of various clusters in a complex inundated plantation



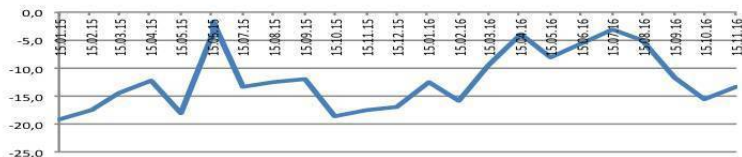
The Earth's rotational velocity is related to many diverse indicators, which are measured by statistics.

Even in our everyday worries, thoughts, moods and even in our fears we are dependent on cosmic energies.

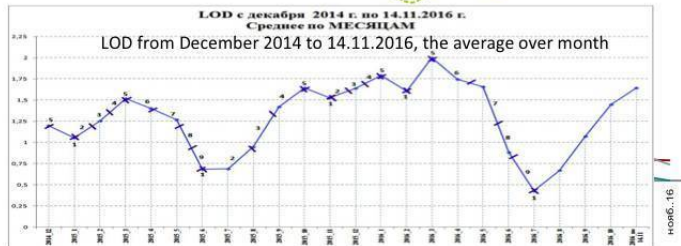
Earth's rotational velocity (LOD) and population's expectation of earthquakes, disasters



Expectations: flood, earthquake, other disaster
Наводнение, землетрясение, другое стихийное бедствие



Social sentiment index (All-Russian Public Opinion Research Center, ARPORC) and the Earth's rotational velocity in 2015-2016

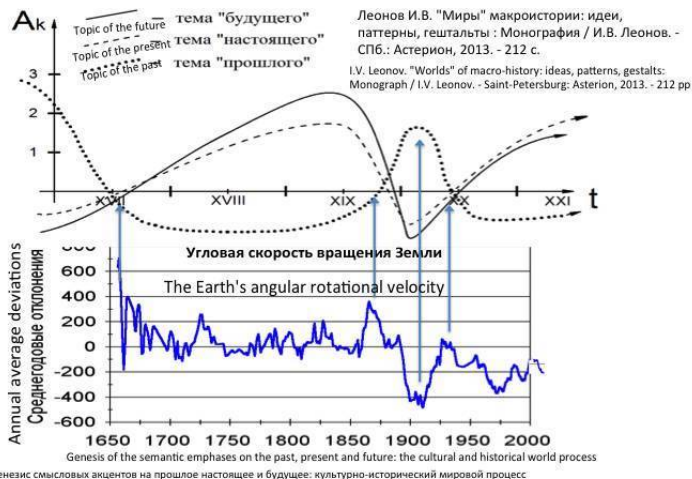


Social sentiment index

Индекс социальных настроений_1



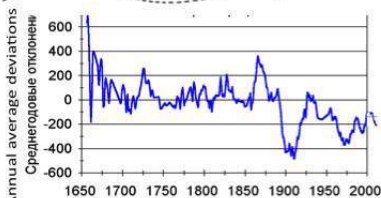
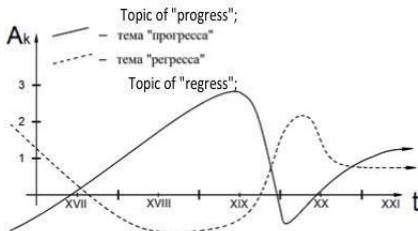
Topic of the past, the present and the future in the world culture and the Earth's rotational velocity



With the abrupt change of the Earth's rotational velocity in the early 1900s, the topic of philosophical understanding of reality also changes within the past-future meta-program: the interest to the past increases. At the peaks of the Earth's rotational velocity growth the priorities of philosophical, spiritual and literary aspirations change.

In society, with the abrupt change of the Earth's rotational velocity happens the abrupt change of the whole culture, the aggravation of the struggle between progressive and regressive views.

Topic of regress and progress in the world culture and the Earth's rotational velocity



I.V. Leonov. "Worlds" of macro-history: ideas, patterns, gestalts: Monograph / I.V. Leonov. - Saint-Petersburg: Asterion, 2013. - 212 pp.

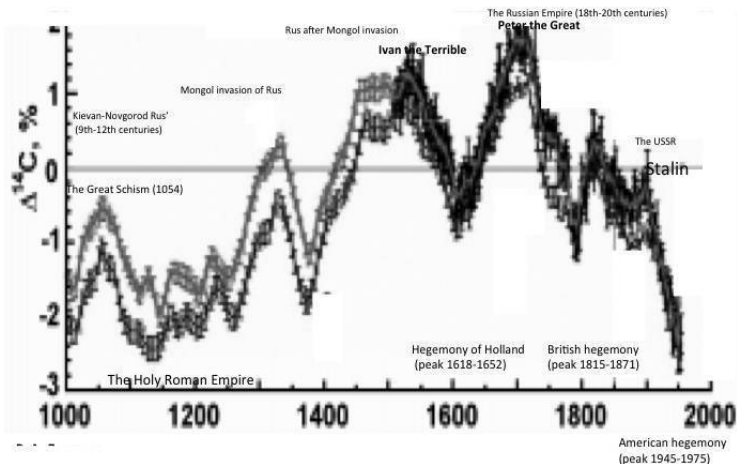
Леонов И.В. "Миры" макроистории: идеи, паттерны, гештальты: Монография / И.В. Леонов. - СПб.: Астерион, 2013. - 212 с.

The relations between indicators of cosmic energies are relatively sustained. Each of them may be used both in reconstruction and forecasting of the rest of them. Reconstruction and forecasting of any of these indicators would be more accurate, if the maximum number of the others is used (*the Earth's rotational velocity, temperature, GCR intensity, concentration of the isotopes, Earth's magnetic field strength, width of annual tree rings etc.*).

Changes in biome and history of mankind occur at the same

time with changes of cosmic energies.

Concentration of the isotopes of carbon contained in annual tree rings in Northern and Southern hemispheres and changes of basis of a political system in Anglo-Saxon and Russian civilizations



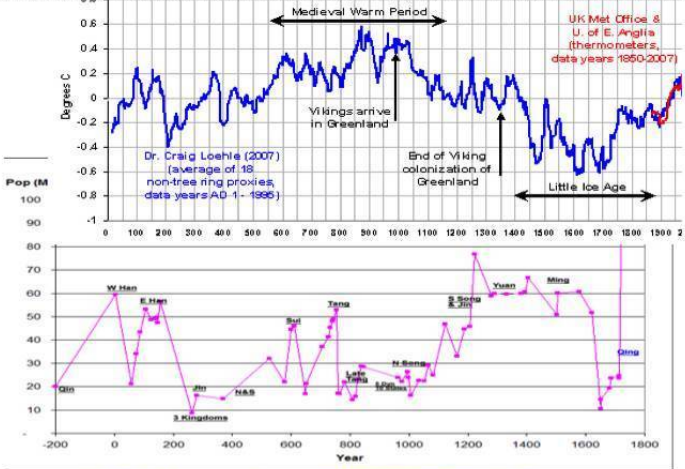
Concentration of the isotopes of carbon contained in annual tree rings and changes in world order

(according to A. Fursov)



In general animals and plants breed better on the territory of Russia when the Earth's rotational velocity reduces. It often coincides with the temperature fall. The same situation can be seen in China after increase of its population.

Average global temperature and increase of population in China

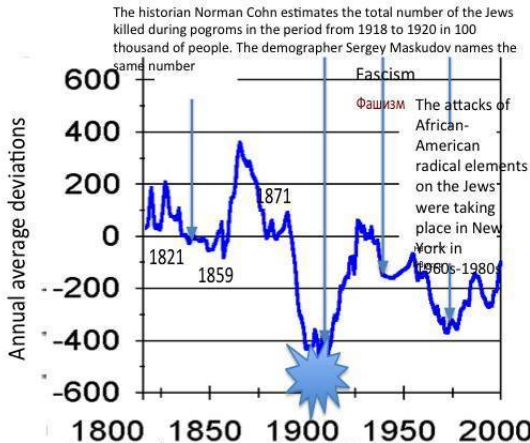


http://ic.pics.livejournal.com/crustgroup_21152339/182661/182661_original.gif

This graph also shows the limits of such relations. In the beginning of 1600s temperature fall reached the critical level and increase of cosmic energies connected with this fall did not compensate for the lack of sun rays. World population began to decrease and the famine and epidemics started.

http://elementy.ru/images/eltpub/revsec_graph5_600.gif

Earth's rotational velocity and Anti-Jewish pogroms in Russia



According to the S.A. Stepanov's data, 1622 of people were killed during the pogroms in October of 1905 (among them were 711 of Jews or 43% from the total number) and 3544 of people were injured (among them were 1207 of Jews or 34% from the total number)

The relations are the same for the whole world. When the cosmic energies was increasing, the status of the Jewish people was getting worse in European countries.

Terroristic acts, protests, revolutions usually occur during changing of rotational directions and densities of powerful cosmic vortex of the ether. It can be predicted by change of rotational velocity of the Earth, by arrangements of planets and by other methods.

Chapter 2. Psycho-cosmic energies and their influence on

terrorism

Terrorism and its victims for many of us is just statistics. For many it is the tragedy.

2.1 Raise of the terrorism: a psycho-cosmic aspect

Terrorism has occupied our planet. This is evil, obvious evil, which as a cancer goes wider and deeper in more countries and societies every day.

<http://ru.sputniknews.lv.com/infographics/20160325/1098520.html>

From 2000 to 2016 years, it has been more than 72 thousands of acts made by terrorists resulted in death of almost 170 thousands of people, and more than 80% of these acts have been made by terrorists organizations, members of which are full of religious fanaticism of the perversion of Islam.

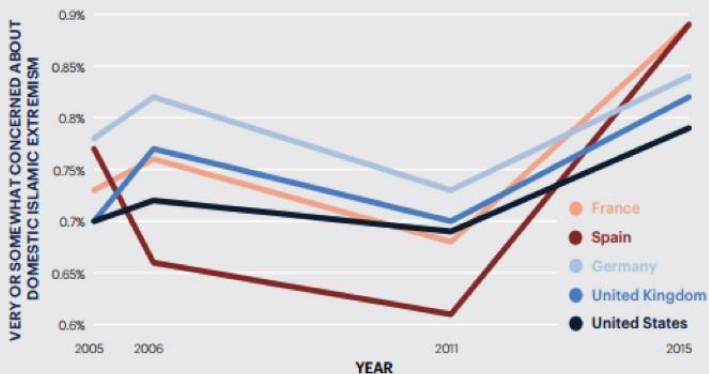
<https://ria.ru/infografika/20160122/1363384811.html>

If we take a look on Figure we see depress tendencies.

FIGURE 24 PERCENTAGE OF PEOPLE IN WESTERN COUNTRIES THAT ARE CONCERNED ABOUT DOMESTIC ISLAMIC EXTREMISM, 2005-2015

Concern about domestic Islamic extremism has increased to the highest levels in 2015.

<https://ria.ru/infografika/20160122/1363384811.html>

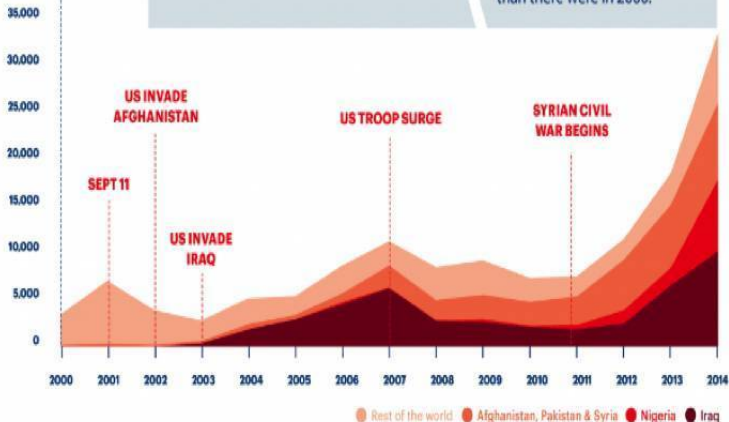


Source: Pew

NUMBER OF DEATHS

Since 2000, there have been over **61,000 TERRORIST ATTACKS**, killing more than **140,000 PEOPLE**.

There are **NINE TIMES MORE PEOPLE KILLED** in terrorist attacks today than there were in 2000.



What are the causes of this phenomena?

Why, particularly in our days, temps of its propagation have risen?

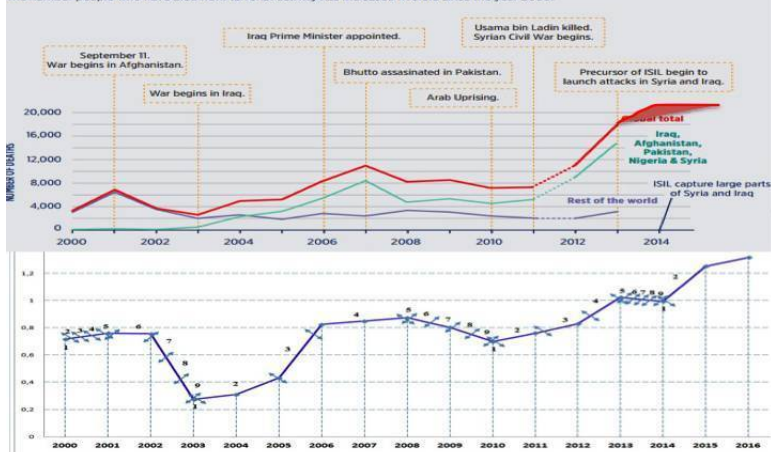
Before, we have been investigating long cycles of Kondratiev N. And have found that they coincides with change in the length of earthdays, rotational velocity of Earth during decades and centuries. And the velocity of flow, rotation of Earth significantly connected to the density of cosmos. For new physicists it is the density of the ether. The energy of ether vortex “feeds” all living species on Earth. Thus, we have come to the

idea to see how energetic flows of the ether are connected with an intensity of terrorism acts. Let's compare graphs describing velocity of rotation of Earth (the length of earthdays) with the intensity of the acts in recent years.

Change of the length of earthdays and the number of victims of terrorist attacks

FIGURE 1 DEATHS FROM TERRORISM, 2000–2013

The number people who have died from terrorist activity has increased fivefold since the year 2000.

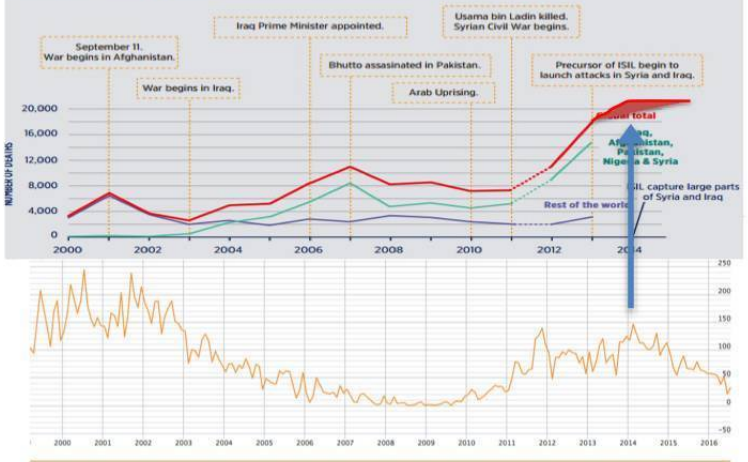


Let's add some data on the intensity of the solar radiation in the electromagnetic range (see.: <http://www.areyou.ru/sun/sun.html>).

The number of victims of terrorist attacks and the solar activity

FIGURE 1 DEATHS FROM TERRORISM, 2000–2013

The number people who have died from terrorist activity has increased fivefold since the year 2000.



The connection of the number of victims with Wolf's number representing the intensity of solar activity is different, in some degree contrary to the connection of rotational velocity (the length of earthdays) of Earth. The causes of this connection on the level of physical processes on the scale of solar system have been explained. (see: Dyatlov V.L. Polarizing model of heterogeneous physical vacuum. Novosibirsk, editing of the Mathematics Department, 1998, 183 pp.). This is the sphere of disputes of physicists and mathematicians. Dyatlov V.L. considers that the gravity-spin and electromagnetic cosmic

energies transform into one another according to the law of continuity of complete electrical, magnetic, gravitational and spin current. But this is according to mathematicians, physicists, but we analyze a terrorism as a social and psycho-cosmic phenomenon. Therefore, we take from them only reasonable and sometimes shining scientific terms – gravity-spin and electromagnetic energies. For ourselves, we note that the connection between Earth's rotational velocity and the number of victims of terrorist attacks is deeper, more evident than the Wolf's number.

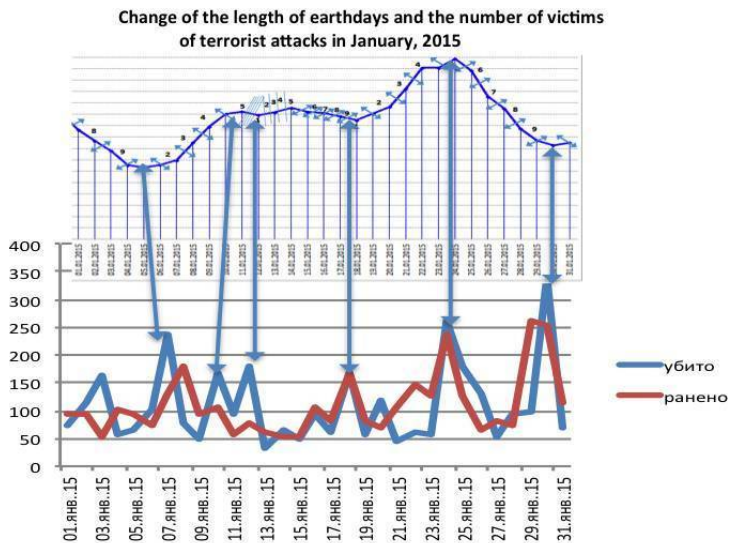
In 2014 43542 people died from terrorists. This surge in fatalities from terrorist attacks is linked to the war in Syria. Only in Syria, there were killed more than 190 thousand of people. According to the Syrian Center of Monitoring Human Rights 33278 people of them were civilians. <http://www.rbc.ru/politics/01/01/2015/54a564b59a7947111c67297f>

In 2015 20378 people died from terrorists. This data is taken from GTD database. It is the most extensive database of terrorist attacks occurred worldwide from 1970. GTD is updated annually. <http://www.start.umd.edu/gtd/contact/>. The length of day is taken from the corresponding laboratory databases. The chart reflects the deviation of the length of day in milliseconds on average values for the entire period of observation. See: <https://www.iers.org/IERS/EN/Science/EarthRotation/EarthRotation.html>

Dependence exists. But in the scale of years.

But will dependencies depend on whether these occur in one day? Let's take the January of 2015.

From GTD we find the number of terrorist attacks per day and the number of victims. Scary figures. Let's plot the number of died and wounded people due to terrorist attacks in this month and connect it with the schedule of the length of earthdays.



We note immediately, that, according to reputable laboratories (see: http://www.thesis.lebedev.ru/magnetic_storms.html?m=1&d=31&y=2015), we have not

found the connection of the intensity of magnetic storms on Earth, and the number of killed people in terrorist attacks in the January 2015. But there is the connection with the Earth's rotational velocity.

At all points of the Earth's rotational reverse (in the days of change of acceleration of rotation), the number of victims of terrorist attacks usually jumps. So that the connection in the rotational velocity to the intensity of the attacks have a decadal and individual days' scale.

And the times of a change of the acceleration of Earth are also the days of a change in the density of the ether around Earth due to this factor. Under the acceleration of Earth, it is covered by waves of the ether. Just like the air on a motorcycle rider gaining speed. Physicists have made a model of changes in an ether density at the body's acceleration change.



This also applies to Earth. Only at the approach of a speed of a body to the speed of light, compact ether does not give the body to increase its speed. And Earth moves in the less compacted layers of the ether, and we did not feel it like sometimes we do not feel the air.

You can see this process clearly in the dynamics.

See: A. Kim. The mechanics of the ether and the principle of relativity. . <http://314159.ru/kim/aether.htm>

This is an important departure. It shows that the peaks of the attacks at the time of change of acceleration of the earth coincide

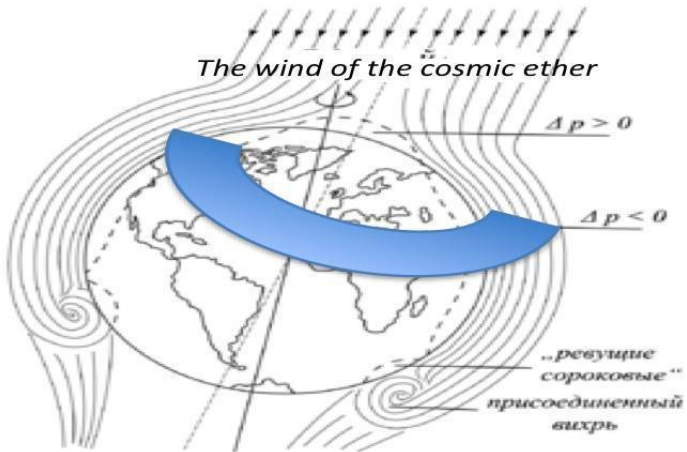
with the change in the ether density.

According to the physics, streams of cosmic ether coming to Earth from the direction of the Leo constellation, and according to the etherodynamics laws of the flow around Earth. At the same time, in the world there are areas of high and low ether pressure. A density of ether in the world is different. Is it related to the spread of terrorism?

See: <http://ether-wind.narod.ru/glava22.htm>. A wind of the ether: a problem, errors, goals V. A. Atsukowski // A wind of the ether. Collection of articles / Edited by V. A. Atsukowski. – M.: Energoatomisdat, 1993. – 288 p. – [ISBN 5-283-04990-6](#).

We select the diagram zone of low pressure ether on the globe.

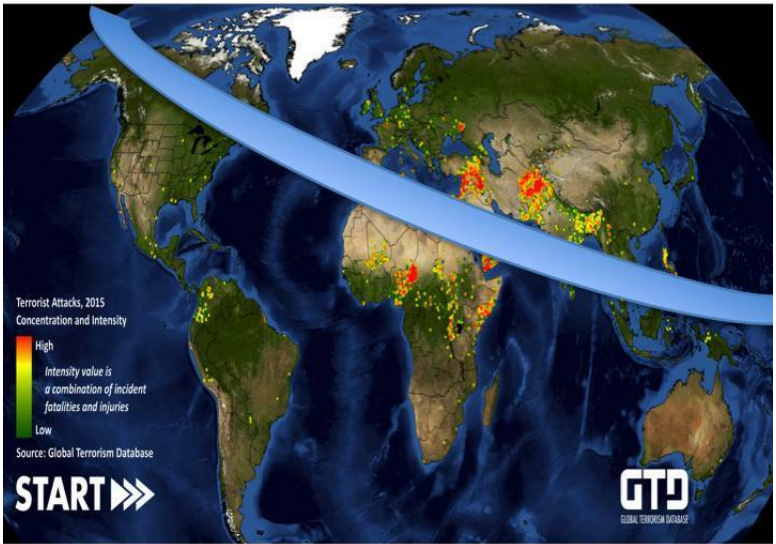
Distribution of the ether wind pressure on the globe
by V. Atsukowski



<https://traditio.wiki/files/thumb/9/9c/>

[Atsukovsky Ether Earth.gif/277px-
Atsukovsky Ether Earth.gif](https://traditio.wiki/files/thumb/9/9c/Atsukovsky_Ether_Earth.gif/277px-Atsukovsky_Ether_Earth.gif)

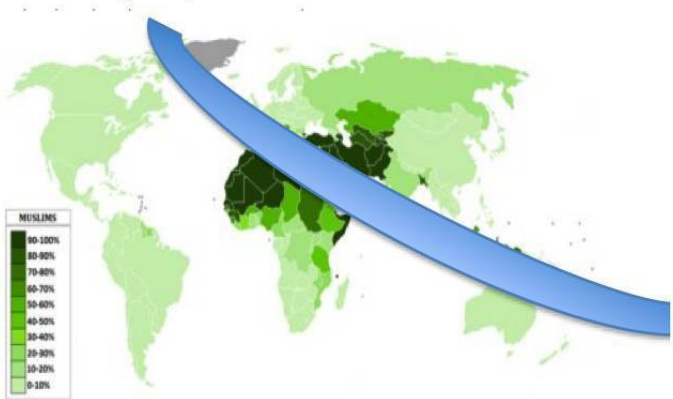
Compare the zone of growth of irregularities in the ether density in the world with places on the map, which marked with the intensity of terrorist attacks. They are the same.



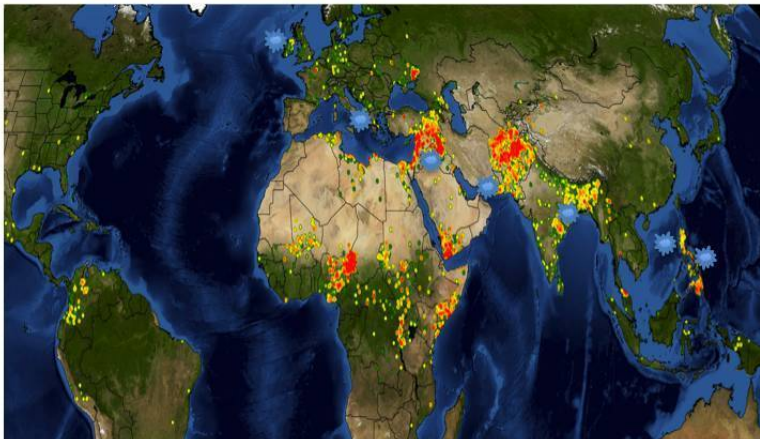
Note that the zone includes a region of a low pressure ether, as well as an unstable region of its pressure. It changes there periodically from a higher pressure area to a lower, and vice versa. Most of the acts of terrorism committed in this zone of an unstable, variable ether flow.

We noted that the terrorism associated with Islamic extremists.

Map of spread of Islam in the world



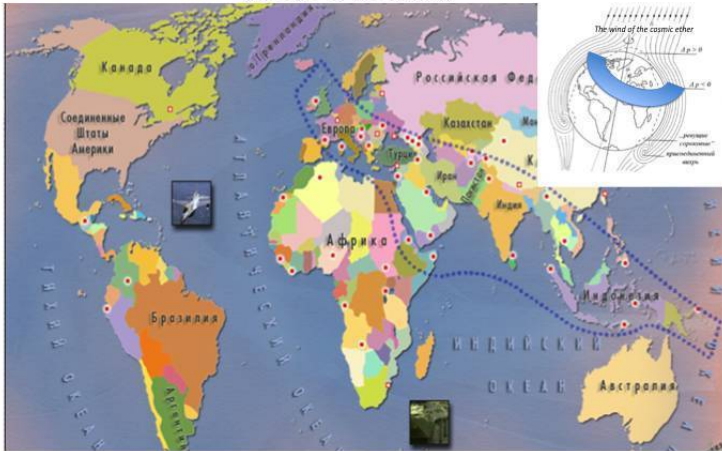
<http://moidagestan.ru/blogs/37290/19290>



<http://moidagestan.ru/blogs/37290/19290>

Yet, there are more coincidences with the spread of terrorism with an unstable pressure zone of the ether rather than with the spread of Islam. Although Islam is prevalent in countries with a similar variable pressure of the ether wind.

The arc of instability



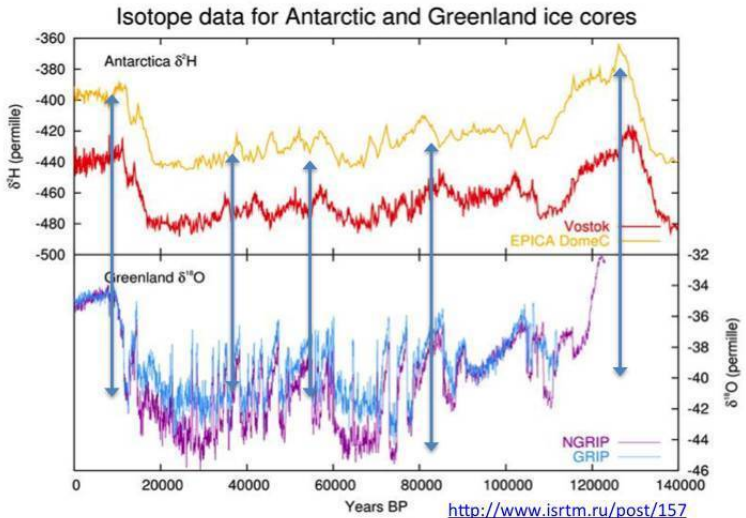
<http://900igr.net/datas/ekologija/Problemy-mira/0007-007-Regionalnye-konflikty-i-problema-terrorizma.jpg>

<http://900igr.net/datas/ekologija/Problemy-mira/0007-007-Regionalnye-konflikty-i-problema-terrorizma.jpg>

With such a view of Islam, it can be considered as a religion, which is more adapted to the psychological characteristics of people born and raised in unstable conditions and a lower pressure of essential flows. But only.

There are subtle scholars of the Islamic terrorism. Mohaddam F.M. (2011) proves that terrorism arises from the social and cultural conditions of life and features of Islamic societies of the modern world. That is, the low density of the ether pervades the

usually started under the major changes on the planet, that representatives of the etherodynamics associates with the density of the ether wind. First of all, this is change in the spread of oxygen and carbon isotopes. Arrows indicate the time of the most intense migrations of our ancestors on Earth.



<http://www.isrtm.ru/post/157>

These migrations coincide with a sharp change in the content of oxygen isotopes.

According to representatives of the etherodynamics, a

formation of oxygen, carbon and other isotopes is associated with increasing of cosmic energies, including densities of the ether streams. And under the change of these densities, its distribution over Earth and the location of the optimum pressure of space ether zones also change. After the brilliant work of A.S. Holmansky (Holmansky A.S. Vortex structure of the nucleus and the periodic law of Mendeleev. M.: 2016 Federal scientific agro-engineering center “VIM”, Moscow), a relation between formation of isotopes and ether vortices can be considered as proven in the framework of classical physics.

Nowadays, cosmic energies change dramatically with an obvious growth trend.

Are modern humans more silly than their ancestors when choosing a place of residence? People who were born in areas of high and low density of the ether are different, as well as people, who was born in one place, but in different historical periods of high and low density of the ether (Konuhov N.I., 2106b). So, the existence of Hyperborea at Sevres near the North Pole has ether-dynamics causes. There is a place at the North Pole with a very high density of ether flows. Hence there are legends about the superiority of the people who were born there.

Obviously, terrorism is first of all a social and political, spiritual deformation of groups of people, or a society. Countries with higher levels of development of economy and social sphere are less prone to terrorism than countries with serious problems in these areas. Social, spiritual well-being of a society overlaps

a factor of lack of the ether in the space today. But the intensity of terrorism, as well as the development of our entire history, economics, has a close relationship with the density of the ether.

Countries in which terrorism is particularly cruel and intense, which have the highest index of terrorism, are located in the considered zone of the ether flows. They are: Afghanistan, Nigeria, Pakistan, Syria, India, Yemen, Somalia, Libya, Thailand, Philippines ...

Accidentally?

Cosmic energies, ether streams penetrate people heads. A whirlwind is at the head of each. Energy vortices recorded, settled in a person from head to toes and heels (they also have a reflection of vortex structures). Long-term EEGs (electroencephalogram) at a distance from electromagnetic interference cities and their comparison with the location of planets, with the non-electromagnetic cosmic energies have shown that people are changing dramatically during these times (planet converts the stream of cosmic ether vortices as they rotate). At a certain combination of cosmic energies (electromagnetic and non-electromagnetic) people are as discarded in the ancient past, our instincts laid bare... And what is there not to have, in our unconscious ... This is a fight for dominance, for power, for the leadership... The need for better organization of a society suddenly revived, a need that until that moment was asleep.

Конец ознакомительного фрагмента.

Текст предоставлен ООО «ЛитРес».

Прочитайте эту книгу целиком, [купив полную легальную версию](#) на ЛитРес.

Безопасно оплатить книгу можно банковской картой Visa, MasterCard, Maestro, со счета мобильного телефона, с платежного терминала, в салоне МТС или Связной, через PayPal, WebMoney, Яндекс.Деньги, QIWI Кошелек, бонусными картами или другим удобным Вам способом.