

Svetlana Jacobson

Misty Dawn

Class of wet felting



Svetlana Jacobson
Misty Dawn. Class of wet felting

http://www.litres.ru/pages/biblio_book/?art=51940798

ISBN 9785449859457

Аннотация

Master Class on Wet Felting. Teaches the basics of felting and creating beautiful textures. This book will be interesting to those who like creativity.

Misty Dawn

Class of wet felting

Svetlana Jacobson

© Svetlana Jacobson, 2020

ISBN 978-5-4498-5945-7

Created with Ridero smart publishing system

Objectives: Learn some of the basics of felting: laying out the wool, different felting methods, felting silk yarn and viscose fibers to wool, making craters using buttons.

Preparations:

Tools and materials: Wool: white; viscose: yellow, red, brown, pink; Bamboo fiber: white; silk yarn, a waterproof tablecloth or plastic sheet for covering a table, some bubble wrap, soap, a spray bottle with warm water, some mesh or tulle, a towel, a felting roll (I use a 36 inch cylinder of foam rubber 3 inches in diameter), Two braids, gloves, manicure scissors, an straight stick, or dowel, for a panel holder, and some flat buttons or coins of different sizes.



Tools and materials

Preparing the workplace: Cover the table with the waterproof tablecloth or plastic sheet. Put the bubble cushion on it, with the bubbles on the table surface, about 24x50 in size. We will be working on the flat side of the bubble wrap.

Layout of wool. Wool felting shrinks along the length of the hair. Therefore, for uniform shrinkage, we will lay out the wool in two crisscrossing layers, in length and width. We need to lay out a square measuring approximately 17x17 inches. Hold the skein of wool in one hand and the other with your working hand, gently separate the tuft of wool from the skein, as shown in the picture and video: <https://www.youtube.com/watch?v=zgBJT2T49OU>



Layout of wool

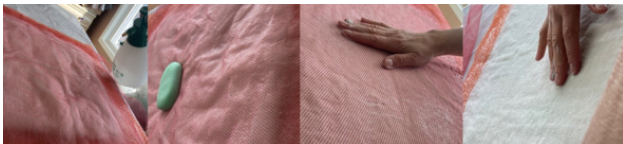
Scheme of layout of wool



Scheme of layout of wool

Making the fibers soapy. We make the fibers soapy so that, in the process of felting, the fibers of the wool can be easily intertwined and bond with each other internally, creating a strong canvas. We put a mesh or tulle on the layout, pour water from a spray bottle to wet the wool. Then, carefully, so as not to shift the layout, we lather our work through the mesh or tulle for about 1—2 minutes. You can see this process on this video:

<https://www.youtube.com/watch?v=zgBJT2T49OU>



Making the fibers soapy

Then remove the mesh or tulle. Our work is ready for design overlay.

Конец ознакомительного фрагмента.

Текст предоставлен ООО «ЛитРес».

Прочитайте эту книгу целиком, [купив полную легальную версию](#) на ЛитРес.

Безопасно оплатить книгу можно банковской картой Visa, MasterCard, Maestro, со счета мобильного телефона, с платежного терминала, в салоне МТС или Связной, через PayPal, WebMoney, Яндекс.Деньги, QIWI Кошелек, бонусными картами или другим удобным Вам способом.